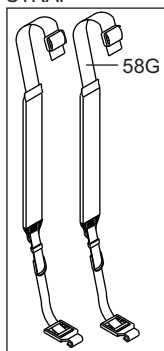
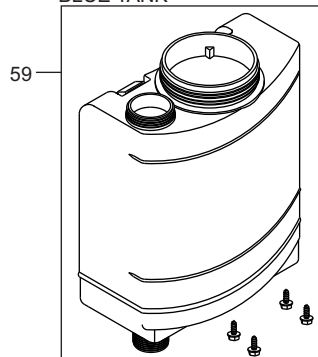
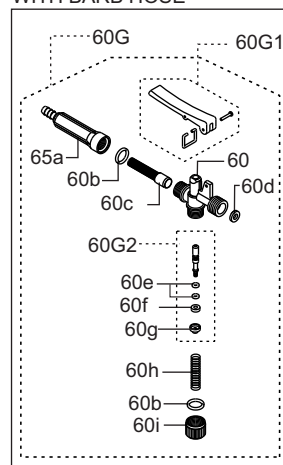
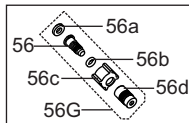
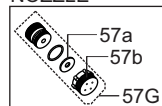
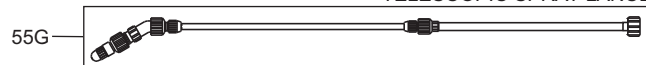


FACTORY-INSTALLED UPGRADE OPTIONS
SPARE PARTS LIST

Part	Code	Description	Part	Code	Description
55G	E219-236-C	Telescopic spray lance	60	E807-173	Valve body
56	E803-092	Nozzle body	60a	E807-075	Filter housing
56a	E803-114	Gasket - N	60b	E803-060	O'ring
56b	E803-083	O'ring	60c	E807-074	Filter insert
56c	E803-090	Nozzle nut (2pcs)	60d	E803-114	Gasket - N
56d	E803-087	Nozzle cap	60e	E803-068	O'ring - V (2pcs)
56G	E803-092-C	Nozzle body ass'y	60f	E803-063	Pin gasket - N
57a	E219-134	Hi-volume nozzle gasket	60g	E803-065	Metal support
57b	E219-133	Hi-volume nozzle nut	60h	E803-067	Plunger spring
57G	E219-610-C	Hi-volume nozzle 11/16" thread aluminum	60i	E803-164	Cap
58G	E501-230-C	Padded carrying strap ass'y	60G	E807-075-C	Shut-off valve ass'y
59	E289-105	Blue tank	60G1	E803-072-C	Valve lever ass'y
			60G2	E803-067-C	Plunger ass'y

PADDED CARRYING STRAP

BLUE TANK

SHUT-OFF VALVE WITH BARB HOSE

ADJUSTABLE BRASS NOZZLE

HI-VOLUME NOZZLE

TELESCOPIC SPRAY LANCE

NOTE:

Please note that marked "=" have standard ORANGE color. Unless a parts order states otherwise they will be supplied in this standard color.

For practical time-saving accessories, special nozzle tips etc. please refer to spec sheet "OPTIONAL SWISSMEX-RAPID ACCESSORIES".

In the interest of continued technologic progress specifications are subject to change without notice.

SWISSMEX-RAPID S.A. DE C.V.

Calle Swissmex No. 500
Col. Las Ceibas,
47440 Lagos de Moreno
Jalisco, México

Fax (474) 7420856
" (474) 7424185
" (474) 7412200
" (474) 7412201

www.swissmex.com
exports@swissmex.com.mx

Operating hints Agricultural Knapsack Sprayer Model 289350
Dear Customer:

You have purchased one of the best knapsack sprayers on the market today. The Safety Hints from the label on your sprayer are repeated here for your protection. We urge you to read and observe them.

FOR YOUR SAFETY AND COMFORT:

- Before using, filling or cleaning any sprayer, read all parts of the operating hints.
- Make sure to set up the sprayer exactly as described in printed operating hints, on reminder tags and/or stickers.
- Wear protective clothing, respirator, gloves, eye protection, etc., whenever using, filling or leaning the sprayer.
- Periodically re-grease the lid gasket, lid vent and piston sleeve where applicable.
- To ensure good performance keep lid vent free of obstruction. Keep connections well tightened.
- Service and replace worn parts as required. Make sure the hose loops freely without kinking.
- Read and follow all instructions of chemical suppliers.
- Do not mix chemical formula inside the sprayer. Use separate container and fill the sprayer from there. Else - as when applying liquid fertilizers- add these after the water.
- Always sift formula through a strainer. If there is none under the lid, use a screened funnel.
- Never fill the sprayer with hot liquids. Max. 30°C = 85°F.
- This sprayer is made for agrichemicals in their recommended water or oil solutions. Do not use caustic, corrosive or flammable solutions.
- Before cleaning or servicing the sprayer allow all pressure to scape. Do not store or transport the sprayer under pressure.
- Unless spraying is to be resumed within hours, drain chemical formula (dispose of it in proper fashion) after use and wash the sprayer -including hose, lance and shut-off valve- with plenty of fresh water.
- Never store formula in a sprayer for more than a few hours.
- Use the sprayer only for jobs for which it was designed. If in doubt, ask your dealer.
- Do not leave any sprayer in reach of children or persons not qualified to use it in correct fashion.
- When not in use -and especially for prolonged storage- keep your sprayer in a protected place away from direct solar heat.

ASSEMBLY

1. On opening the shipping box locate the following parts:
 - 1 Pump handle
 - 1 Pump lever
 - 1 Spray lance
 - 1 Tank lid (below the tank)

Inside the tank: 1 Strainer, 1 agitator, 1 cylinder holder nut, 1 cylinder, 1 pump holder nut, 1 bushing guide, 1 felt ring, 1 pump tube with hose and shut-off valve, and a plastic bag with: 3 "C" lock pins, 1 cotter pin, 3 small washers 1 big washer and 1 adjustable nozzle.

2. Take out the parts inside the tank; take the pump tube out carefully.
3. Lay down the sprayer over a table or a flat surface. Place the cylinder in the bottom opening of the tank fix it firmly with the cylinder holder nut.
4. With the sprayer in vertical position, place the bushing guide and the pump holder nut with the felt ring on the small tank opening. Grease the piston sleeve and the pumping tube and put it in the cylinder, guiding carefully the piston sleeve to avoid damages. Tighten the pump holder nut.
5. Insert the pump lever in the pump tube placing a small washer on each side and fix it with an "C" lock pins.
6. Pass the pump handle through the holes on the base (the grip should be at the same side of the pump lever). Fix the pump handle to the pump lever with a small washer and an "C" pin. On the other end of the base fix the handle with a big washer and a cotter pin.
7. Attach the nozzle to the spray lance. Manually, tighten slightly.
8. Attach the spray lance to the shut-off valve and tighten it manually. Please check that the gasket is in its place.
9. Attach the agitator to the pump tube.

OPERATION

(see section For Your Comfort and Safety)

Bear in mind that rubber parts on modern sprayer-e.g. piston sleeves, O'rings -resist virtually any agrichemical. Yet improper use (formulas in greater-than-normal concentration, strong industrial solvents not commonly known and/or used at the time of manufacture) may cause even the best materials to deform or wear out prematurely. If this ever happens, call your supplier for support.

MAINTENANCE

(see section For Your Comfort and Safety)

When rinsing out sprayer, lance, hose, etc., be extra thorough when changing over from herbicides to other types of formulas.

- On hot days a dry gasket may "freeze" the lid. Keep it greased.-

PUMP DISASSEMBLY

1. Position sprayer upright on a flat surface. Pull the "C" lock pins from the upper end of the pump con rod. Watch those washers and "C" lock pins.
2. Remove the agitator through the filler port.
3. Loosen the big pump nut atop the tank. Pull out pump.
4. Loosen plastic piston bolt. (Screw counter-clockwise by pressing its slot against the top edge of the pump handle connector.)
5. To check the ball valve, remove piston bolt and make sure the seal is clean and in good shape.
6. Be careful to re-assemble the piston holder disk with its groove facing the piston.

Knapsack Sprayerl 289350

BASIC CONFIGURATION

Part	Code	Description	Part	Code	Description
1	E289-225	Pressure chamber	32	E803-083	O'ring
1G	E289-225-C	Pressure chamber ass'y	33	E219-211	Nut
2	E189-021	Piston disk	34	E803-263	Nozzle cap
3	E189-054	Piston - G8	35	E289-005	Tank (it includes integrated washer screws)
4	E080-022	Plastic check ball			
5	E189-033	Piston fitting	36	E501-004	Filter screen
6	E080-003	Pump holder nut	37G	=E501-001-C	Tank lid ass'y
7	=E080-008	Felt ring	40	E501-020	Breather valve
8	E080-201	Bushing guide	41	E501-002	Lid gasket
9	E080-023	O'ring	42	=E289-007	Tank base
10	E189-027	O'ring	45G	=E189-115-C	Pump lever
11	E289-024	Cylinder	46	E326-037	Washer
12	E189-025	Cylinder holder nut	47	E289-014	"C" lock pin
13	E803-081	Hose 3/8"	48	=E289-116	Pump handle
13G	E803-081-C	Hose with clamp	49	E501-015	Handle grip
14	E501-082	SX 9-18 clamp	50	E200-050	Agitator
15	E501-010	Washer	51	E501-034	Carrying strap
16	E803-060	O'ring	51G	E501-034-C	Carrying strap ass'y (2 pcs)
17	E152-198	Lock pin 1/8 X 1"			
18	E803-073	Valve body	52	E189-036	Strap hook
18G	E803-073-C	Valve body ass'y 3/8	53	E501-025	Shoulder pad
19	E803-166	Plunger	54	E501-035	Strap buckle
19G	E803-067-C	Plunger ass'y	former version		
20	E803-068	O'ring - V (2pcs)			
21	E803-063	Pin gasket - N	39	E289-087	Interior fasteners
22	E803-065	Metal support	43	E189-149	Plastic nut
23	E803-067	Plunger spring	44G	E080-047-C	Screw w/washer
24	E803-164	Cap	44	E080-048	Washer
25G	E803-072-C	Valve lever ass'y	55	E289-500	Integrated washer screw
28	E803-114	Gasket - N	56	E289-019	Pressure chamber
29	E803-059	Nut	56G	E289-055-C	Pressure chamber ass'y
30	E803-085	Spray lance	57G	E189-012-C	Pump lever
30G	E803-285-C	Spray lance ass'y	58	E501-037	Washer 1/2"
31	E803-262	Nozzle body	59	E501-051	"R" lock pin 3/32"
31G	E803-262-C	Nozzle body ass'y			

