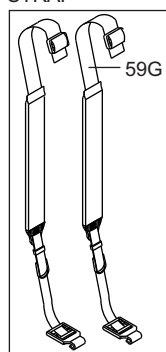
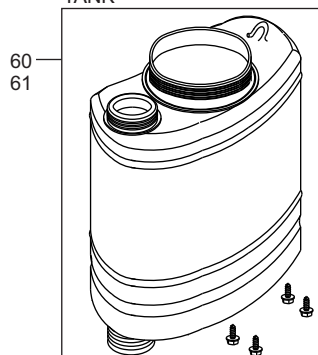
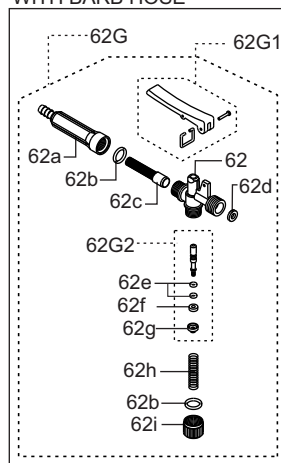
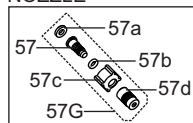
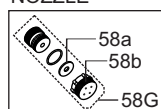
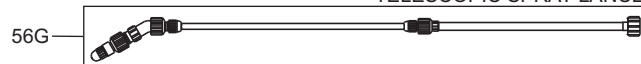


FACTORY-INSTALLED UPGRADE OPTIONS

Part	Code	Description	Part	Code	Description
56G	E219-236-C	Telescopic spray lance ass'y	62	E807-173	Valve body
57	E803-092	Nozzle body	62a	E807-075	Filter housing
57a	E803-114	Gasket - N	62b	E803-060	O'ring
57b	E803-083	O'ring	62c	E807-074	Filter insert
57c	E803-090	Nozzle nut (2pcs)	62d	E803-114	Gasket - N
57d	E803-087	Nozzle cap	62e	E803-068	Oring - V (2pcs)
57G	E803-092-C	Nozzle body ass'y	62f	E803-063	Pin gasket - N
58a	E219-134	Hi-volume nozzle gasket	62g	E803-065	Metal suport
58b	E219-133	Hi-volume nozzle cap	62h	E803-067	Plunger spring
58G	E219-610-C	Hi-volume nozzle 11/16" thread aluminum	62i	E803-164	Cap
			62G	E807-075-C	Shut-off valve ass'y
59G	E501-230-C	Padded carrying strap ass'y	62G1	E803-072-C	Valve lever ass'y
60	E189-505	Yellow tank	62G2	E803-067-C	Plunger ass'y
61	E189-105	Blue tank			

PADDED CARRYING STRAP

TANK

SHUT-OFF VALVE WITH BARB HOSE

ADJUSTABLE BRASS NOZZLE

HI-VOLUME NOZZLE

TELESCOPIC SPRAY LANCE

NOTE:

Please note that marked "=" have standard ORANGE color. Unless a parts order states otherwise they will be supplied in this standard color.

For practical time-saving accessories, special nozzle tips etc. please refer to spec sheet "OPTIONAL SWISSMEX-RAPID ACCESSORIES".

In the interest of continued technologic progress specifications are subject to change without notice.

SWISSMEX-RAPID S.A. DE C.V.

Calle Swissmex No. 500
Col. Las Ceibas,
47440 Lagos de Moreno
Jalisco, México

Fax (474) 7420856
" (474) 7424185
" (474) 7412200
" (474) 7412201

www.swissmex.com
exports@swissmex.com.mx

Operating hints **Agricultural Knapsack Sprayer Model 189325**

Dear Customer:

You have purchased one of the best knapsack sprayers on the market today. The Safety Hints from the label on your sprayer are repeated here for your protection. We urge you to read and observe them.

FOR YOUR SAFETY AND COMFORT:

- Before using, filling or cleaning any sprayer, read all parts of the operating hints.
- Make sure to set up the sprayer exactly as described in printed operating hints, on reminder tags and/or stickers.
- Wear protective clothing, respirator, gloves, eye protection, etc., whenever using, filling or cleaning the sprayer.
- Periodically re-grease the lid gasket, lid vent and piston sleeve where applicable.
- To ensure good performance keep lid vent free of obstruction. Keep connections well tightened.
- Service and replace worn parts as required. Make sure the hose loops freely without kinking.
- Read and follow all instructions of chemical suppliers.
- Do not mix chemical formula inside the sprayer. Use separate container and fill the sprayer from there. Else -as when applying liquid fertilizers- add these after the water.
- Always sift formula through a strainer. If there is none under the lid, use a screened funnel.
- Never fill the sprayer with hot liquids. Max. 30°C = 85°F.
- This sprayer is made for agrichemicals in their recommended water or oil solutions. Do not use caustic, corrosive or flammable solutions.
- Before cleaning or servicing the sprayer allow all pressure to scape. Do not store or transport the sprayer under pressure.
- Unless spraying is to be resumed within hours, drain chemical formula (dispose of it in proper fashion) after use and wash the sprayer -including hose, lance and shut-off valve-with plenty of fresh water.
- Never store formula in a sprayer for more than a few hours.
- Use the sprayer only for jobs for which it was designed. If in doubt, ask your dealer.
- Do not leave any sprayer in reach of children or persons not qualified to use it in correct fashion.
- When not in use -and especially for prolonged storage- keep your sprayer in a protected place away from direct solar heat.

ASSEMBLY

- On opening the shipping box locate the following parts:
 - 1 Plastic bag containing 3 "C"-shaped locking pins, 4 metal washers and 1 "R" lock pin
 - 1 Nozzle assembly
 - 1 Pump handle
 - 1 Spray lance
 - 1 Agitator
 - 1 Pump connecting rod
- Place the sprayer upright on a table or other raised surface.
- Insert the top end of the pump con rod (larger side) into the eye on the pump while placing one washer on each side of the eye. Then secure the C-shaped locking pin making sure it fits on the space exactly (they groove).
- Tilt the tank back, logo facing up.
- With the handle pointing downward, insert the pump shaft into the opening in the tank base. As the shaft is pushed forward insert the free end of the con rod through the hole of the handle. When the shaft has gone as far as it can go through the second opening add the larger washer and secure with locking pin. Do the same on the con rod end.
- Attach nozzle assembly. Tighten securely by hand.
- Attach spray lance to the shut-off valve. Tighten securely by hand, making sure all seals and gaskets are snugly in place.
- Attach agitator as required.

OPERATION

(see section For Your Comfort and Safety)

Bear in mind that rubber parts on modern sprayer-e.g. piston sleeves, O rings -resist virtually any agrichemical. Yet improper use (formulas in greater-than-normal concentration, strong industrial solvents not commonly known and/or used at the time of manufacture) may cause even the best materials to deform or wear out prematurely. If this ever happens, call your supplier for support.

MAINTENANCE
(see section For Your Comfort and Safety)

-On hot days a dry gasket may "freeze" the lid. Keep it greased.-

1. Position sprayer upright on a flat surface. Pull the "C" pin from the upper end of the pump con rod. Watch those washers and "C" lock pins.
2. Remove the agitator through the filler port.
3. Loosen the big pump nut atop the tank. Pull out pump.
4. Loosen plastic piston bolt. (Screw counter-clockwise by pressing its slot against the top edge of the pump handle connector.)
5. To check the ball valve, remove piston bolt and make sure the seal is clean and in good shape.
6. Be careful to re-assemble the piston holder disk with its groove facing the piston.

BASIC CONFIGURATION

BASIC CONFIGURATION

This diagram illustrates the basic configuration of a vacuum cleaner motor unit. The components are labeled as follows:

- 1**: Motor housing (top)
- 1G**: Motor housing (bottom)
- 2**: Motor housing (middle)
- 3**: Motor housing (middle)
- 4**: Motor housing (middle)
- 5**: Motor housing (middle)
- 6**: Motor housing (middle)
- 7**: Motor housing (middle)
- 8**: Motor housing (middle)
- 9**: Motor housing (middle)
- 10**: Motor housing (middle)
- 11**: Motor housing (middle)
- 12**: Motor housing (middle)
- 13**: Motor housing (middle)
- 13G**: Motor housing (middle)
- 14**: Motor housing (middle)
- 15**: Motor housing (middle)
- 16**: Motor housing (middle)
- 17**: Motor housing (middle)
- 18**: Motor housing (middle)
- 18G**: Motor housing (middle)
- 19**: Motor housing (middle)
- 19G**: Motor housing (middle)
- 20**: Motor housing (middle)
- 21**: Motor housing (middle)
- 22**: Motor housing (middle)
- 23**: Motor housing (middle)
- 24**: Motor housing (middle)
- 25G**: Motor housing (middle)
- 28**: Motor housing (middle)
- 29**: Motor housing (middle)
- 30**: Motor housing (middle)
- 30G**: Motor housing (middle)
- 31**: Motor housing (middle)
- 31G**: Motor housing (middle)
- 32**: Motor housing (middle)
- 33**: Motor housing (middle)
- 34**: Motor housing (middle)
- 36**: Motor housing (middle)
- 37G**: Motor housing (middle)
- 39**: Motor housing (middle)
- 40**: Motor housing (middle)
- 41**: Motor housing (middle)
- 42**: Motor housing (middle)
- 43**: Motor housing (middle)
- 44G**: Motor housing (middle)
- 45G**: Motor housing (middle)
- 46**: Motor housing (middle)
- 47**: Motor housing (middle)
- 48**: Motor housing (middle)
- 49**: Motor housing (middle)
- 50**: Motor housing (middle)
- 51G**: Motor housing (middle)
- 52**: Motor housing (middle)
- 53**: Motor housing (middle)
- 54**: Motor housing (middle)
- 55**: Motor housing (middle)
- 56**: Motor housing (middle)
- 56G**: Motor housing (middle)
- 57**: Motor housing (middle)
- 57G**: Motor housing (middle)
- 58G**: Motor housing (middle)
- 59**: Motor housing (middle)