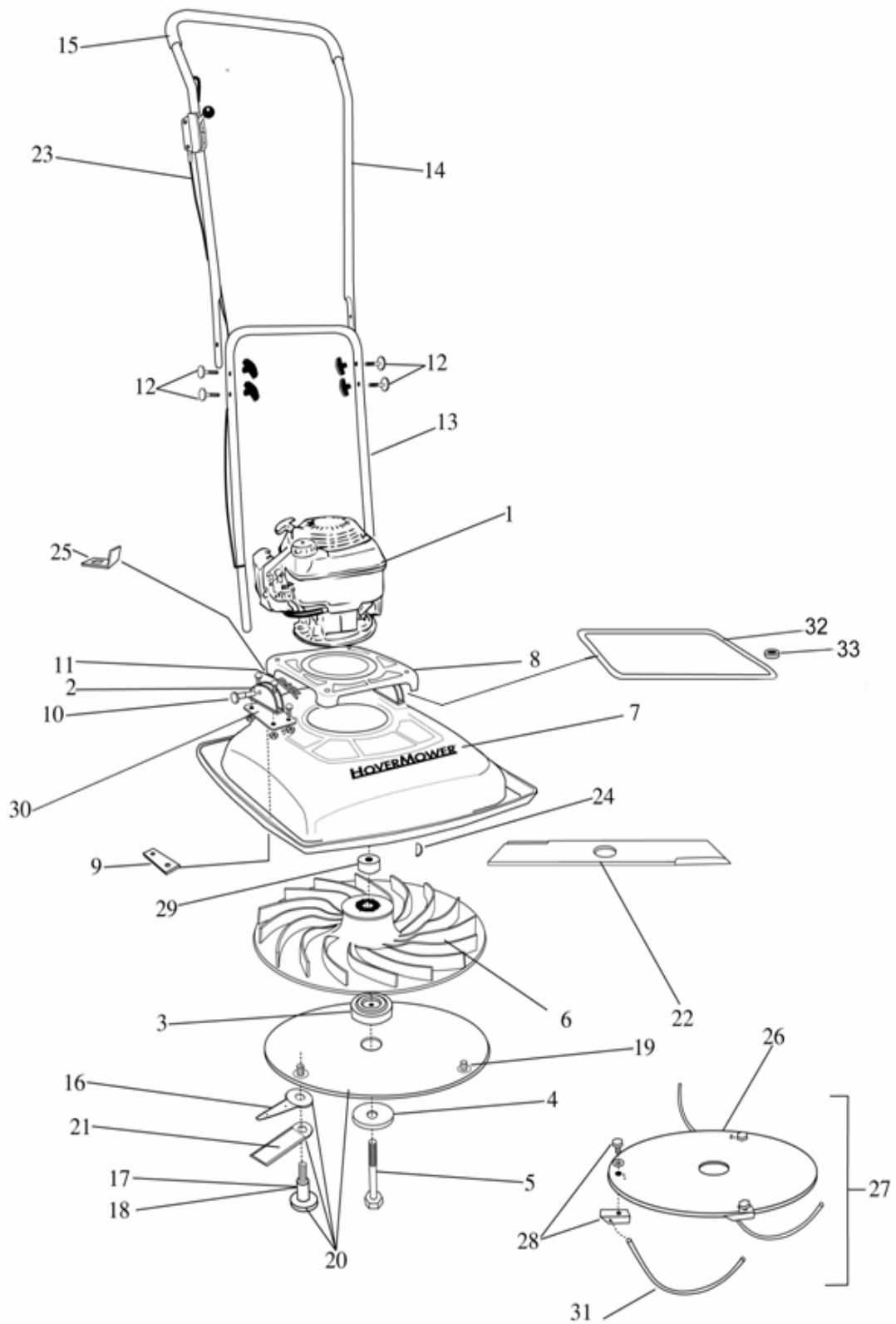


MOWER PARTS HM19H-4



PARTS LIST FOR MOWER # HM19H-4

<u>SCM#</u>	<u>PART #</u>	<u>DESCRIPTION</u>
1	HM19GCV160-N7SI	Honda 5.5 HP, 4 Cycle Engine--U.S & Euro Certified
2	HM 1550	Handle Bracket
3	HM19S-21556A	Height Adjustment Spacer 1/2"
3	HM19S-21556B	Height Adjustment Spacer 1/4"
4	HM19S-21557	Impeller Flat Washer
5	HM19S-215581	Impeller Retaining Bolt 2 1/2"
5	HM19S-215582	Impeller Retaining Bolt 3"
5	HM19S-215583	Impeller Retaining Bolt 3 1/2"
6	HM19S-21560N	Impeller - 15"
7	HM19S-21562	Deck with Logos and Decals
8	HM19S-21565	Engine Mount
9	HM 22569	Handle Mounting Plate
10	HM 22573	Clevis Pin
11	HM 2257	Hair Pin Cotter Key
12	HM 22583	Handle Knob W/Hardware
13	HM 1549	Lower Handle
14	HM19H-21585	Upper Handle (With Grip)
15	HM 1582	Handle Grip
16	HM 1601-12	Nylon Blades (Pkg. Of 12)
17	HM 1602-3	Shoulder Bolts for Nylon Blades (Pkg. Of 3)
18	HM 1603-3	Shoulder Bolts for Stainless Steel Blades (Pkg. Of 3)
19	HM19S-21603	Cutter Disc
20	HM19S-21606N	Cutter Disc with Nylon Blades & Bolts
20	HM19S-21606S	Cutter Disc with Stainless Steel Blades & Bolts
21	HM 1605-3	Reversible Stainless Steel Blades (Pkg. Of 3)
22	HM19S-1607	Bar Blade (Not Available In The U.S.)
23	HM19H-21571	Throttle Control & Cable
24	HM19S-2175	Impeller Woodruff Key
25	HM 1551N	Handle Stop
26	HM19S-21613	Cutter Disc for Nylon Strings
27	HM19S-21613T	Cutter Disc Assy. with Nylon Strings & Fasteners
28	HM 1600	String Attachment Fastener (Pkg. Of 3)
29	HM19H-215585	Impeller Spacer
30	HM19H-50	Right Handle Bracket Extension Plate
31	HM 1615-1	.130" Magnum Gatorline - 1 lb. Donut
31	HM 1615-3	.130" Magnum Gatorline - 3 lb. Donut
32	HM19S-1566	Impeller Guard
33	HM19S-21611	Retaining Washer
		<u>ACCESSORIES</u>
	HM19S-215584	Impeller "Pull" Bolt
	HM19S-21563	4" Lift Kit
	HM19S-21590	12" Handle Extension Kit(Long Handle, Brake & Throttle Cables)
	HM19S-2170L	Brake Cable Long
	HM19S-2171L	Throttle Cable Long
	HM1549L	Lower Handle Long

This exploded perspective view illustrates the assembly of a handheld brushcutter. The components are numbered as follows:

- 1**: Engine unit
- 2**: Carburetor
- 3**: Fan
- 4**: Drive shaft
- 5**: Drive pin
- 6**: Blade
- 7**: Blade guard
- 8**: Blade guard cover
- 9**: Blade guard cover pin
- 10**: Blade guard cover pin
- 11**: Blade guard cover pin
- 12**: Blade guard cover pin
- 13**: Blade guard cover
- 14**: Blade guard cover
- 15**: Blade guard cover
- 16**: Blade guard cover
- 17**: Blade guard cover
- 18**: Blade guard cover
- 19**: Blade guard cover
- 20**: Blade guard cover
- 21**: Blade guard cover
- 22**: Blade guard cover
- 23**: Blade guard cover
- 24**: Blade guard cover
- 25**: Blade guard cover
- 26**: Blade guard cover
- 27**: Blade guard cover
- 28**: Blade guard cover
- 29**: Blade guard cover
- 30**: Blade guard cover
- 31**: Blade guard cover
- 32**: Blade guard cover
- 33**: Blade guard cover
- 34**: Blade guard cover
- 35**: Blade guard cover

PARTS LIST FOR MOWER # HM19H4-OP

<u>SCM#</u>	<u>PART #</u>	<u>DESCRIPTION</u>
	HM19GCV160-N7SI-	
1	OP	Honda 5.5 HP, 4 Cycle Engine--U.S & Euro Certified
2	HM 1550	Handle Bracket
3	HM19S-21556A	Height Adjustment Spacer 1/2"
3	HM19S-21556B	Height Adjustment Spacer 1/4"
4	HM19S-21557	Impeller Flat Washer
5	HM19S-215581	Impeller Retaining Bolt 2 1/2"
5	HM19S-215582	Impeller Retaining Bolt 3"
5	HM19S-215583	Impeller Retaining Bolt 3 1/2"
6	HM19S-21560N	Impeller - 15"
7	HM19S-21562	Deck with Logos and Decals
8	HM19S-21565	Engine Mount
9	HM 22569	Handle Mounting Plate
10	HM 22573	Clevis Pin
11	HM 2257	Hair Pin Cotter Key
12	HM 22583	Handle Knob W/Hardware
13	HM 1549	Lower Handle
14	HM19H-21585	Upper Handle (With Grip)
15	HM 1582	Handle Grip
16	HM 1601-12	Nylon Blades (Pkg. Of 12)
17	HM 1602-3	Shoulder Bolts for Nylon Blades (Pkg. Of 3)
18	HM 1603-3	Shoulder Bolts for Stainless Steel Blades (Pkg. Of 3)
19	HM19S-21603	Cutter Disc
20	HM19S-21606N	Cutter Disc with Nylon Blades & Bolts
20	HM19S-21606S	Cutter Disc with Stainless Steel Blades & Bolts
21	HM 1605-3	Reversible Stainless Steel Blades (Pkg. Of 3)
22	HM19S-1607	Bar Blade (Not Available In The U.S.)
23	HM19H-21571	Throttle Control & Cable
24	HM19S-2175	Impeller Woodruff Key
25	HM 1551N	Handle Stop
26	HM19S-21613	Cutter Disc for Nylon Strings
27	HM19S-21613T	Cutter Disc Assy. with Nylon Strings & Fasteners
28	HM 1600	String Attachment Fastener (Pkg. Of 3)
29	HM19H-215585	Impeller Spacer
30	HM19H-50	Right Handle Bracket Extension Plate
31	HM 1615-1	.130" Magnum Gatorline - 1 lb. Donut
31	HM 1615-3	.130" Magnum Gatorline - 3 lb. Donut
32	WM 1016	Brake Cable
33	HM19S-2172N	Bail Arm
34	HM19S-21566	Impeller Guard
35	HM19S-21611	Retaining Washer
		<u>ACCESSORIES</u>
	HM19S-215584	Impeller "Pull" Bolt
	HM19S-21563	4" Lift Kit
		12" Handle Extension Kit (Long Handle, Brake & Throttle Cables)
	HM19H-21591	Cables)
	WM 1016L	Brake Cable, Long
	HM19H-21571L	Throttle Cable, Long
	HM 1549L	Lower Handle Long

EASTMAN INDUSTRIES LIMITED WARRANTY STATEMENT EFFECTIVE JUNE 1, 2002

Eastman Industries warrants to the original retail purchaser that this Eastman product is free from defects in material and workmanship. Under normal use and maintenance from the date of retail purchase, Eastman Industries agrees to repair or replace at Eastman Industries' discretion, any defective product free of charge at any authorized Eastman Servicing Dealer within the time limit listed below.

THIS LIMITED WARRANTY IS EXTENDED TO THE FIRST, ORIGINAL RETAIL PURCHASER ONLY, AND IT IS NOT TRANSFERRABLE TO SUBSEQUENT OWNERS.

RESIDENTIAL OR NON-INCOME PRODUCING USE – 2 YEARS.

Complete unit for residential, or non-income producing use, will be covered by this limited warranty for 2 years from the date of retail purchase.

COMMERCIAL, INSTITUTIONAL, INDUSTRIAL OR INCOME PRODUCING USE – 1 YEAR.

Complete units will be covered against defects in material and workmanship for a period of 1 year from the date of purchase.

RENTAL USE – 60 DAYS.

Complete unit will be covered against defects in material and workmanship for a period of 60 days from the date of purchase.

DISCLAIMER OF IMPLIED WARRANTIES

This limited warranty is in lieu of all other expressed or implied warranties, including any warranty of **FITNESS FOR A PARTICULAR PURPOSE** and any implied warranty of **MERCHANTABILITY** otherwise applicable to this purpose. Eastman Industries shall not be liable for any special incidental or consequential damages.

THE WARRANTY DOES NOT INCLUDE OR COVER:

- Defects, malfunctions or failures resulting from abuse, misuse, neglect, modifications, alternation, normal wear, improper servicing, use of unauthorized attachments, stale fuel or any adverse reaction due to incorrect storage procedures, including failure to provide or perform required maintenance services as prescribed in the owner's Manual. **Preventative maintenance as outlined in the owner's Manual is the customer's responsibility.**
- Cost of regular maintenance service or parts, such as filters, fuel, lubricants, oil changes, spark plugs, blade sharpening, worn blade, cable/linkage adjustments, or brake and clutch adjustments.

- Repairs necessary due to improper fuel, contaminants in the fuel system or failure to properly prepare the fuel system prior to any period of non-use over three months.
- Repair necessary due to failure to properly prepare the mower prior to any period of non-use.
- Pickup and delivery charges.

All repairs covered by this warranty must be performed by an Authorized Eastman Service Dealer using Eastman parts.

For more information concerning engine warranty refer to the enclosed engine Manual and warranty statement....

OWNER'S RESPONSIBILITY

The owner shall demonstrate reasonable care and follow preventative maintenance, storage, fuel and oil usage as prescribed in the owner's Manual. Should a product difficulty occur, you must, at your expense, arrange to deliver or ship your Eastman Industries unit for warranty repairs and arrange for pick-up or return of your unit after the repairs have been made. If you do not know the location of your nearest authorized Eastman Industries Servicing Dealer, call Eastman Industries at 1-800-760-1680 during normal working hours. Repair parts and accessories replaced under this warranty are warranted only for the balance of the warranty period. All parts replaced under warranty become the property of Eastman Industries.

GENERAL CONDITIONS

Repair by an Authorized Eastman Industries Dealer is your sole remedy under this warranty.

Eastman Industries is not liable for indirect, incidental or consequential damages in connection with the use of Eastman Products covered by this warranty, including any cost or expense of providing substitute equipment or service during reasonable periods of malfunction or non-use pending completion of repairs under this warranty.