

WIDEMEX®

MANUAL DE OPERADOR



**SEGADORA
MANOJEADORA T-BB**

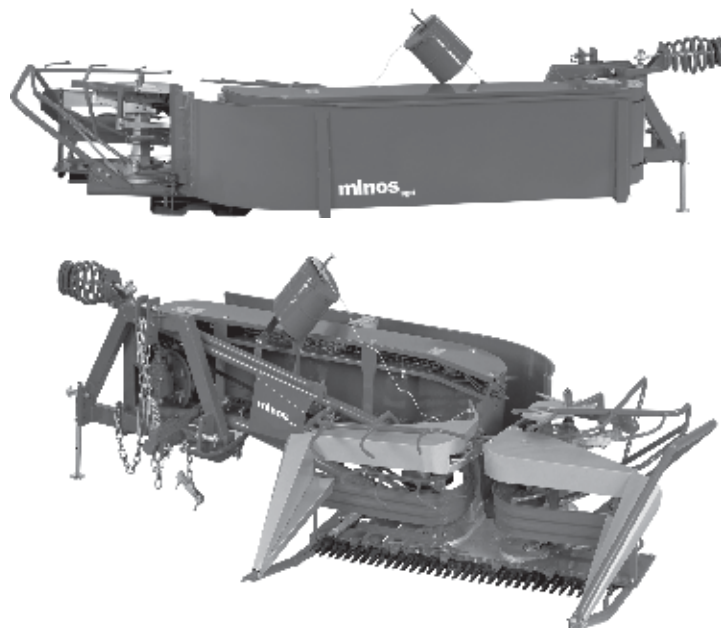


MODELO

623201



1. GENERAL	1
2. INTRODUCTION OF THE MACHINE	2 - 7
3. MAINTENANCE AND REPAIR	8 - 9
4. WORK SAFETY	10
5. TECHNICAL DOCUMENTATION	11
6. SPARE PARTS LIST	12-44



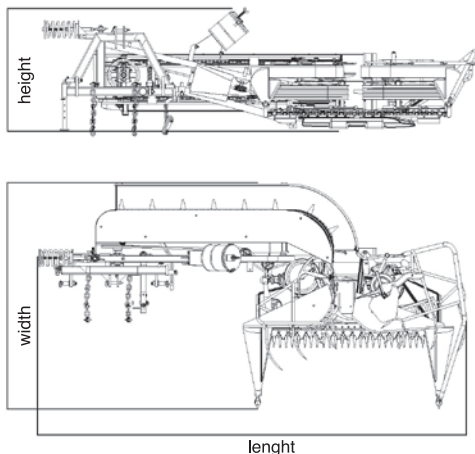
MANUFACTURER INFORMATION

Agricultural Machinery

Fatih Mah. 1191 Sk. No: 17/A P.K.35414 Gaziemir - İZMİR - TÜRKİYE

Ph : +90.232 281 54 04 - 281 63 30 - 281 63 31 Fax: +90.232 281 57 10

www.minosagri.com - e-mail: info@minosagri.com - www.facebook.com/minosagri - www.twitter.com/turkaygrup

**REAPER-BINDER REAPING MACHINE****Figure 1 – Dimensions of Machine**

TÜRKAY Reaper-Binder is a power take-off driven reaping and binding machine carried by a tractor.

Please read the user's manual carefully before operating the machine and pay attention to explanations and warnings given in order to use it in compliance with the rules and purpose.

W (width)
2320 mm

L (length)
3250 mm

H (height)
900 mm

HANDLING :**ATTENTION!**

**WHILE THE TRACTOR IS MOVING WITH
THE MACHINE MOUNTED ON THE
TRACTOR**

- Do not carry animals or human on the machine.
- Comply with the relevant traffic rules on the roads open to traffic.
- Check and mount the handling lightening, warning systems and also protection systems.
- Operations with reaper-binder machine should be performed under sufficient daylight and traffic rules should be complied with on roads open to traffic. The machine should be enlightened in compliance with the traffic rules particularly at nights. We suggest reflector enlightening.

Handling of machine from one place to another:

1. Handling with Forklift : Choose a forklift appropriate for the weight of machine. Lift the machine from centre of gravity. Insert the forklift hook in the part on the machine made for handling purposes and handle the machine.

2. Handling with Crane: It is the same with the method of handling with forklift. Insert the crane hook into the part located at the centre of gravity of the machine and handle the machine. Make sure that the crane hook lock is functioning.

3. Handling by means of Pallet: Chose a pallet appropriate for the size of machine. Handle the machine by means of a forklift while over a pallet.

Handling point**Figure 2 – Handling of machine from one place to another****ATTENTION!**

**DO NOT GET UNDER THE
MACHINE DURING HANDLING!**

- Do not let anyone under or close to the machine at the area in which handling with crane, forklift or pallet is made.
- Make sure that the hooks and ropes used during handling are safe and sound.

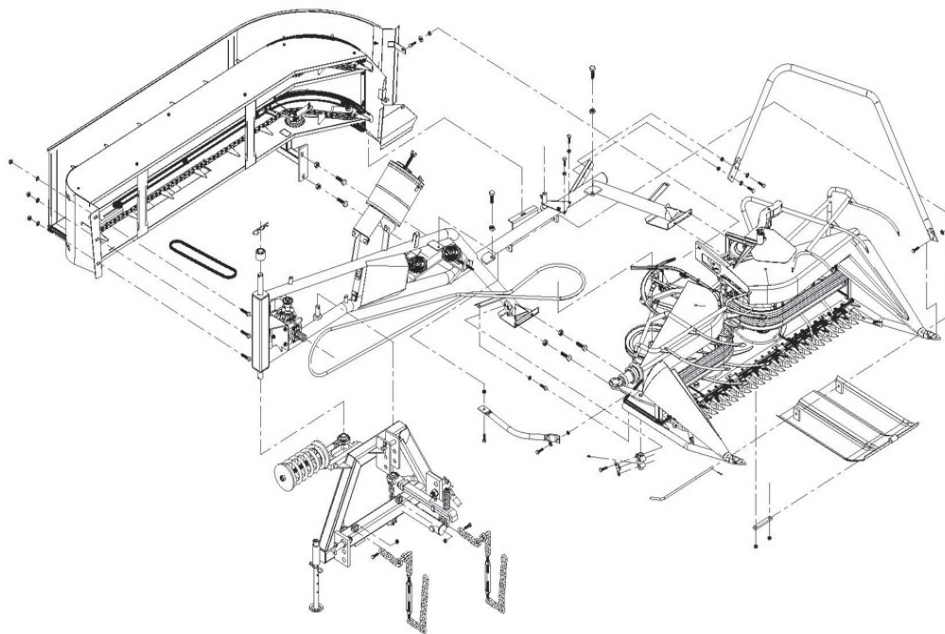
**ATTENTION!**

**MAKE SURE THAT THE HOOKS AND ROPES
OF CRANE AND FORKLIFT USED DURING
HANDLING ARE SAFE!**



Reaper-Binder Reaping Machine realizes following proceedings thanks to its special structure on fields where field agriculture is applied:

- This machine only does reaping and collection of crops.
 - It automatically adjusts crop reaping height according to humps and holes by means of a spring.
 - The reaper-binder machine is used for all crops (wheat and grained barrows, oats, ryes) grown on all kinds of fields (meadows, small hills, soft soils) within the same scope.
 - It is easy to handle the machine over the roads, and transition to field system is made by 90 degrees turning left on the horizontal axis.
 - Machine can be mounted on the tractor by only one person.
 - In order to prevent great obstacles for the operator of the machine, it has a protection mechanism which prevents the reaping machine be damaged due to factors such as roots, pebbles and etc. and lowers the speed of impacts that would cause breaks.
- Since it is power take-off driven, it provides saving from draft of tractor.



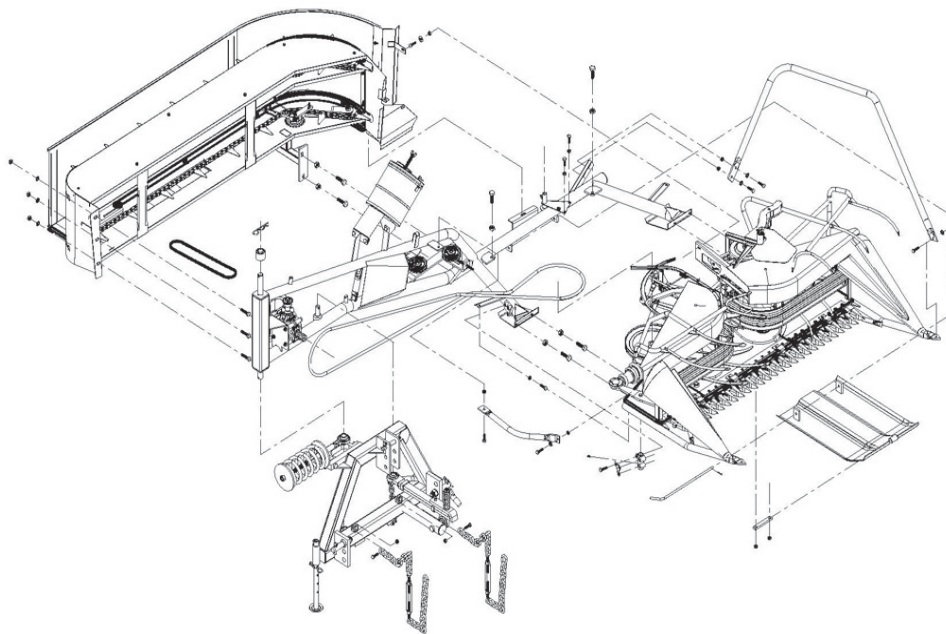
1. Main Body
2. Three-point linkage Mechanism
3. Movement Transmission Mechanism (Transmission Box)
4. Reaping Mechanism
5. Carrier Band Group

Figure 3 – Main Units of the Machine



Reaper-Binder Reaping Machine realizes following proceedings thanks to its special structure on fields where field agriculture is applied:

- This machine only does reaping and collection of crops.
 - It automatically adjusts crop reaping height according to humps and holes by means of a spring.
 - The reaper-binder machine is used for all crops (wheat and grained barrows, oats, ryes) grown on all kinds of fields (meadows, small hills, soft soils) within the same scope.
 - It is easy to handle the machine over the roads, and transition to field system is made by 90 degrees turning left on the horizontal axis.
 - Machine can be mounted on the tractor by only one person.
 - In order to prevent great obstacles for the operator of the machine, it has a protection mechanism which prevents the reaping machine be damaged due to factors such as roots, pebbles and etc. and lowers the speed of impacts that would cause breaks.
- Since it is power take-off driven, it provides saving from draft of tractor.



1. Main Body
2. Three-point linkage Mechanism
3. Movement Transmission Mechanism (Transmission Box)
4. Reaping Mechanism
5. Carrier Band Group

Figure 3 – Main Units of the Machine



Mounting the machine on the tractor :

- Mount the **REAPER-BINDER REAPING** Machine on the tractor by means of three-point linkage mechanism. Also insert the upper and lower connection pins into the corresponding category.
- **Note:** Tractors having a max draft upto 40BG are expressed as Category I, and tractors having a draft between 40-100BG are expressed as Category II. Therefore, please select the diameters of upper and lower safety pins and insert them according to category I or category II. The **REAPER-BINDER REAPING** Machine is configured according to Category II.
- **See Table–1.** Insert the safety pin. Adjust the upper and lower levers so as to keep the machine parallel to the ground. Meanwhile the tractor should be at a level ground.

Category	Max. Draft (BG)	Lower lever tractor connection pin : hole diameter Ø (mm) (max.) - (min.)	Upper lever tractor connection pin : hole diameter Ø (mm) (max.) - (min.)
I40	22,10 - 21,84	19,56 - 19,3
II	40-100	28,45 - 28,19	25,91 - 25,7
III	80-225	36,85 - 36,32	32,26 - 32
IV	180-400	50,8 - 49,7	45,5 - 45,2

Table–1

(Upper and lower lever connection pins required to mount the machine on the tractor and dimensions)

Operation with REAPER-BINDER MACHINE



- Maximum input revolution of a safely mounted machine is 540 rev./minute.
- Make sure that the revolution number of pto shaft of the selected tractor reaches to the number of revolutions appropriate for the machine.



ATTENTION!

**ADJUST AND MAKE PREPARATIONS FOR
OPERATION ONLY WHEN THE TRACTOR IS
NOT RUNNING**

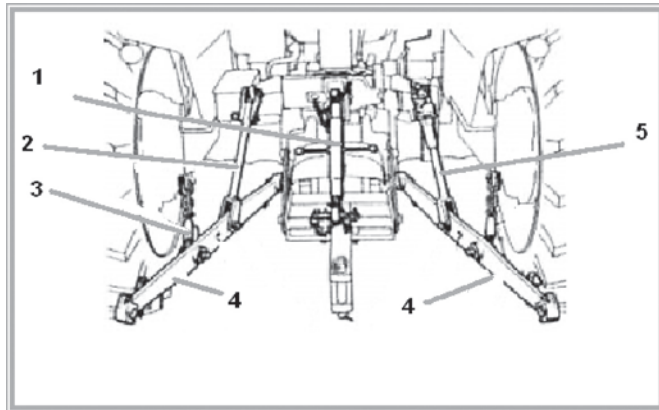


Figure 10- Mounting the machine on the Tractor



- 1-Upper Connection Lever
- 2-Left Hanging Lever
- 3-Stabilizer Chains
- 4-Lower Connection Levers
- 5-Right Hanging Lever

• While mounting the machine on the tractor:

First connect the unadjusted lower connection lever, then connect the adjusted lever and finally connect the upper connection lever (middle lever). While demounting the machine do exactly reverse of this process and first demount the middle lever.

• Connection of the Shaft:

The shaft used on **REAPER-BINDER REAPING** Machine is ES... Shaft. The shaft used for power transmission from the tractor to agricultural tools and machinery is manufactured in an articulated and adjustable form.

- Before connecting the shaft, clean the units of pto shaft and cutter and lubricate with grease. Then slide the shaft on pto shaft until the pin exactly fits.

The sliding gap of the shaft should be minimum 5 cm and maximum 15 cm. Secure the pto shaft protector with hand chain. This precaution is taken in order to prevent turn of fixed parts on the tractor and the **REAPER-BINDER REAPING** Machine.

- Connect and disconnect the shaft only when the ignition switch is off, engine is turned off, pto shaft is removed from the gear and the machine is seated on the ground.

- Insert the protective pipe, protective funnel of the shaft and also pto shaft and bring it to a position in compliance with the rules. If length of the shaft you use while mounting the machine on the tractor, a bending shall occur on the shaft during lifting and operation of the machine. Bring the shaft axle length into a form appropriate to the tractor in the workshop. **See Figure-11**

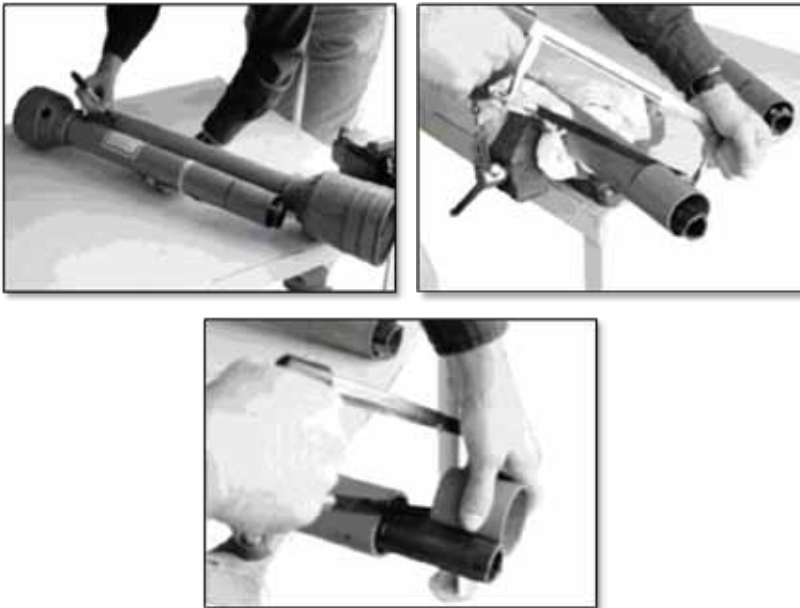


Figure 11 - Adjusting the length of the P.T.O shaft to the proper dimension for the tractor.

**ATTENTION!**

DO NOT INTERFERE THE MACHINE BY HAND, FOOT AND FOREIGN SUBSTANCES WHILE THE MACHINE IS RUNNING.

- Pay attention to mount the shaft is mounted safely and correctly.
- Do not let anyone in the operation area of the machine while the pto shaft is running.
- Pay attention not to let anyone stand in the environment where the turning units of shaft and pto shaft are located while the pto shaft is running.
- Do not operate the pto shaft when not required.
- Hazard with regards to operation of the machine for a little more after the pto shaft is stopped should be taken into consideration. Do not stand near the machine within this period. Approach the machine when turning movement completely stops.
- Make sure that the protective pipe case of the shaft is mounted.
- Operate **REAPER - BONDER REAPING** Machine only with original **TURKEY** shaft. TURKAY shall not be responsible for any failure arising due to use of other shafts.

•Handling the Machine to the field:

Start the tractor for about a minute. Lift the machine with the main hydraulic lever. Insert the safety lock in order to prevent damage on the hydraulic system due to shakes that may occur on the road. Stretch the stabilizer chains and avoid movement and looseness on the road.



- While on the road, lift the machine up and lock the control lever in order to prevent falling down.
- In case road pto shaft is used, it should not be forgotten that the revolution number depends on the speed of tractor; and make sure that the turning direction is not reverse during reverse movement.
- Pay attention to handling position of the machine taking tractor wheels into consideration.
- Pay attention to load status or centrifugal momentum of the machine during turning movements.
- It is dangerous to work with tractor on sloped fields. If you still have to work on sloped field despite of this danger, work carefully and make turns slowly. Make sure that the tractor is equipped with sufficient additional weight in order to assure safe movement stability and to process the sloped working field.

• **Before starting work on the field** : Make the height adjustment by bringing the tractor hydraulic control lever position to control position. While in position control status, when you slightly move the hydraulic lever the machine rises up and stops at a level; if you again move the lever the machine rises more and stops; in other words the machine shall not go to the highest point as in draft control.

Note: Hydraulic up-down lever is raised up and kept at a certain level. In this case, if the tool and the machine rise up completely, then the pre selection lever is at the “**DRAFT CONTROL**” status. If the tool and the machine do not rise up completely and stops at a certain level, then it is at the “**POSITION CONTROL**” status. Position control status keeps the tool and machine connected to hydraulic connection levers at a certain height and ensures operation over the soil. While working with machinery such as centrifugal fertilizer distribution machine pre-selection lever should be at position control status.

- Operation speed of the machine shall be adjusted in accordance with lone working conditions.

TIGHTNESS OF NUTS AND BOLTS

Make sure that all nuts and bolts connecting various parts are tightened after the machine is installed. Also check this tightness before each operation.

CONTROL OF BINDING MECHANISM

Press on the automatic ratchet and manually turn it in the direction of the arrow on the main transmission belt pulley. Continue this process until the needle returns to the point where it started movement; your binding system shall make a complete revolution. Check whether or not any negative situation or a compulsion occurs.



ATTENTION!

Do not drive the binding mechanism automatic ratchet manually while the machine is operated driven by the tractor. Otherwise, you may get injured by the needle and collector forks running very fast.

CONNECTION TO TRACTOR AND CONTROL OF PTO SHAFT

Connect the machine to tractor from three points. Prop up the pto shaft and connect one end of shaft to tractor and the other end to the machine. Start the tractor engine, and take it to idle speed. Provide low speed movement to the machine by bringing the pto shaft lever to operation position. Make sure that the main transmission pulley and collector forks are moving in the correct direction. (That's a precaution against reverse direction pto shaft movement).



CONNECTION OF BINDING ROPE

1. Open the cover of rope box. Take out the rope end you take from the middle of rope coil and place the coil in the box.
2. Close the rope box cover after you insert the rope end from the middle of the cover.
3. Bring ratchet providing tension over its socket on the cover and adjust tension of the rope. Attention: The rope should not be so tense or loose while pulling out of box.
4. After reeving the rope from two wire pools connected on the frame and the first eye in the middle of needle, reeve it from the eye at the end of needle.
5. Then, bind the rope to the shuttle frame located opposite of needle at an appropriate point.
6. Manually press on the automatic ratchet.
7. Manually turn the main transmission belt as to rotate the pulley in the direction of arrow. The needle will move towards the shuttle. Continue to turn the shuttle until the needle returns to the point where it started movement. You will see the tense rope between the needle and shuttle. Now your machine is ready for binding.
8. The size of bundles is adjusted by inserting end of automatic ratchet tension spring into appropriate holes. You can obtain the biggest bundle with fourth hole.

ADJUSTMENT OF BOBBIN CASE

1. If the bundles are not tied, are not knotted and thread is at the blade of pliers, control the thread by dismantling from the blade of pliers; if one end of the thread has been rent by smashing, loosen head screw as one tour, make a bundle tied again, continue this adjustment in case of levels for 1 and $\frac{1}{2}$ tours. If one end of the thread has been cut without smashing at the pliers, tighten screw as one tour and continue adjustment like this.
2. If it is knotted and knotted thread is not gone out or hardly gone out from pliers, loosen wedge as 1 or $\frac{1}{2}$ tour with the help of adjustable pliers.
3. If ends of threads are not cut smoothly, adjust screw No. 9 by loosening in the same table that there will be very small gap between positions of blade No. 6 and wheel No.5; if blade has become blunt, dismantle and hone it. After adjusting blade, it is not necessary to tighten screw No. 9 any longer. A light tightness is sufficient to hold blade. Otherwise you can break blade housing.
4. The reason why bundle has been formed is not only lack of adjustment of bobbin case. A knotting is passing places of thread can cause faults of tying. If thread has not been knotted anywhere, it means that diskette pressing to cap of thread box presses with much power. It is loosened butterfly nut seen in Pose 1 of Table 3 as a few tours. If thread exits more it causes that bundles become looser also.
5. If machine takes out bundles tying each other, stop the machine and remove thread wastes accumulating in the pliers. Thread cutter blade has become blunt or has been out of kilter. Dismantle, hone and adjust blade.

**ATTENTION!**

**STOP THE MACHINE BEFORE STARTING
MAINTENANCE AND REMOVE STARTING
SWITCH!**

Reaper-Binder Machine was manufactured in the manner that it requires very little maintenance and repairing. It should be considered the following matters in connection with maintenance and repairing:

- Control all screws and nuts and tighten them if necessary after running for the first 5 hours and before running following.
- Make secured repairing by selecting appropriate spare parts while repairing the machine.
- Use a pair of gloves in cutting works and benefit from tools of appropriate sets in replacing running parts.
- Renew gear oils and grease oils regularly.
- Attach cables to battery and generator in electric welding works to be made in tractors and machines attaching tractors.
- Spare parts should be in accordance with the technical characteristics specified by the manufacturer firm. For that reason, consider to use original spare parts.

- Gear oil should be replaced firstly after 30 working hours and then after following 300 working hours always. Amount and quality of gear oil to be filled in are explained in the paragraph 5.1 “Technical Values” in details. Machine should be kept in hard and plain ground and in closed and dry environment. Machine should be protected against rolling and overturning dangers by placing it on chocks.
- In order to provide a high working security and work quality it is considered positions of cutting blades highly. For that reason it should be considered that blades have been tightened appropriately and have been eroded in the same adjustment before every running. Twisted blade should be replaced immediately.

CONTROL (A)	MAINTENANCE (B)		CHANGE (C)		
Maintenance Period ==>	Daily	Weekly	30 Hours	100 Hours	400 Hours
Lubrication (Control of transmission lubricant level)			A		C
Oil change (sae140)					
Oil leak control	A				
Cutter wear control	A				
Oil filling in greasers	B				
Tightness Control(nuts-bolts)	A		C		
Cleaning	B				

Table 3- Maintenance Periods



WORK SAFETY

Security Labels:

There are three types of danger labels.

Danger: Importance of safety labels: they should be on the machine in order to prevent serious injuries, deaths and long-term life risks that may arise due to misuse of the machine.

Warning : Importance of warning labels:

Attention: Importance of attention labels: they indicate that the risks that may give harm to machine due to misuse of the machine should be paid attention to.



ATTENTION!

READ THE USER'S MANUAL PROVIDED BY THE MANUFACTURER COMPANY.

Labels identifying the machine should be available on each machine. Information such as machine type, address of the manufacturer, machine model, serial number, year of manufacture and standard weight of the machine should be available on these labels.

	<ul style="list-style-type: none">• Pay attention also to applicable safety and accident prevention rules of professional chambers besides explanations available in user's manuals related to the machine
	<ul style="list-style-type: none">• Do not stand in the turning area of the machine. Crush hazard.
	<ul style="list-style-type: none">• Do not interfere the machine by hand, foot and foreign substances while the REAPER-BINDER REAPING Machine is running. • Do not place your arm and foot between the machine and the tractor or do not hold the machine during operation. (Crush hazard)
	<ul style="list-style-type: none">• The machine shall continue to work for a little more even if the engine is stopped. Make sure that the machine is completely stopped.
	<ul style="list-style-type: none">• Keep the distance between yourself and the machine. The machine may throw parts as stone during operation. Take precautions.
	<ul style="list-style-type: none">• Stop the engine, make sure that it shall not start while working on the machine.

• Above warning and explanatory plates (labels) present important explanations with regards to non-hazardous operation. Compliance with these labels shall serve for your own safety. Immediately renew the damaged warnings and explanatory plates.

• Do not let anyone stand between the machine and tractor during operation. Make sure that the machine is secured against sliding by means of a braking mechanism or skid.

• Make sure that the clothes on the machine operator are tight. Baggy clothes should be avoided.

• Keep the machine clean against fire hazard.

• Mount the machine in compliance with the rules and connect only to mechanisms set forth.

• Never leave the driver's seat during movement.

• Crushing and cutting points shall occur in units operated by cutter parts or spring power. Pay attention to these points.

• Place the machine on the ground before leaving the tractor, stop the engine and remove the ignition key.

• Get on and off the tractor when the hydraulic system is off.

• Keep the foreign substances that may damage the machine away from operation field of machine.

• Adjust the operation speed of your machine based on the working conditions and status of the field to be worked in.

• Do not climb over the machine while mounted on the tractor.

• REAPER-BONDER REAPING Machine should be turned on and off only by the driver of the tractor.

• In case the tractor on which the machine is mounted on does not have a closed driver cabinet, please use a noise protector and goggles during operation.

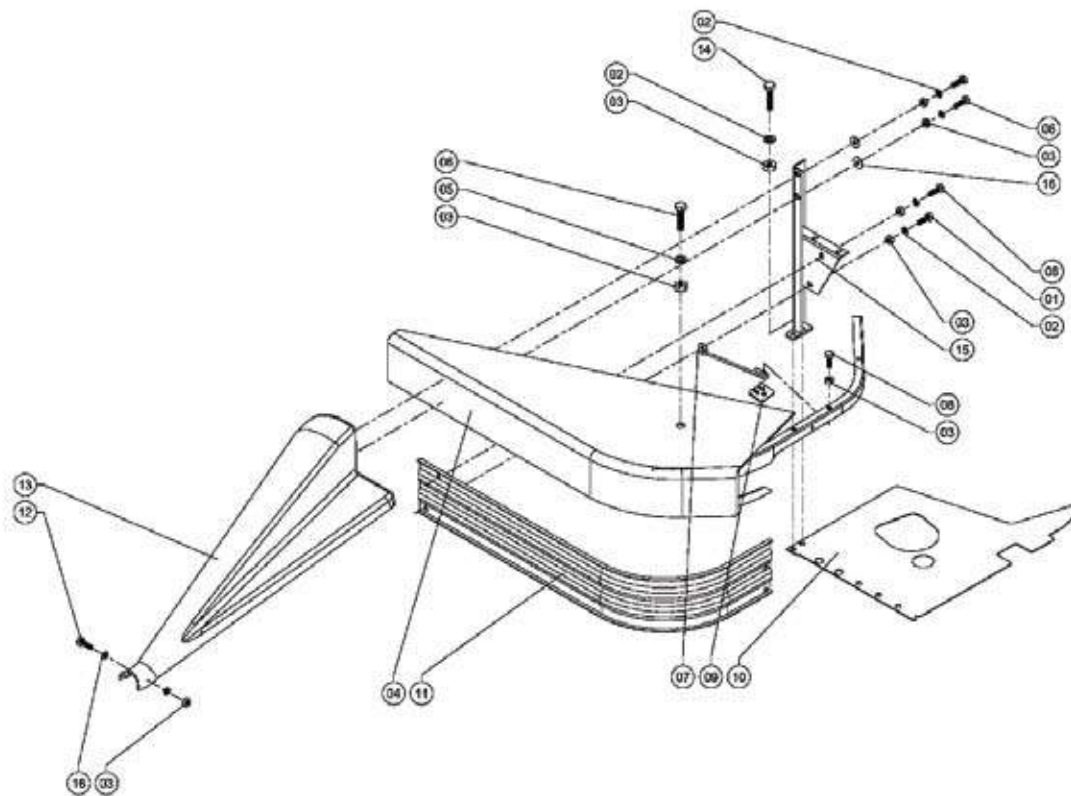
**Technical Values: REAPER-BINDER REAPING Machine**

TECHNICAL SPECIFICATION		T-BB
Overall Length (mm)	Transportposition	3460
	Working position	1900
Overall Width (mm)	Transportposition	1900
	Working position	3470
Overall Height (mm)		1050
Reaping Width (mm)		1400
Reaping Height (mm)		Adjustable
Linkage of Suspension System		Category II
Capacity (da/h)		4,5 - 5
Machine Weight (kg)		385
P.T.O. Shaft Rotations (max) (min-1)		540
Required Tractor Power (HP)		35 - 45

Table 4 – Technical Values



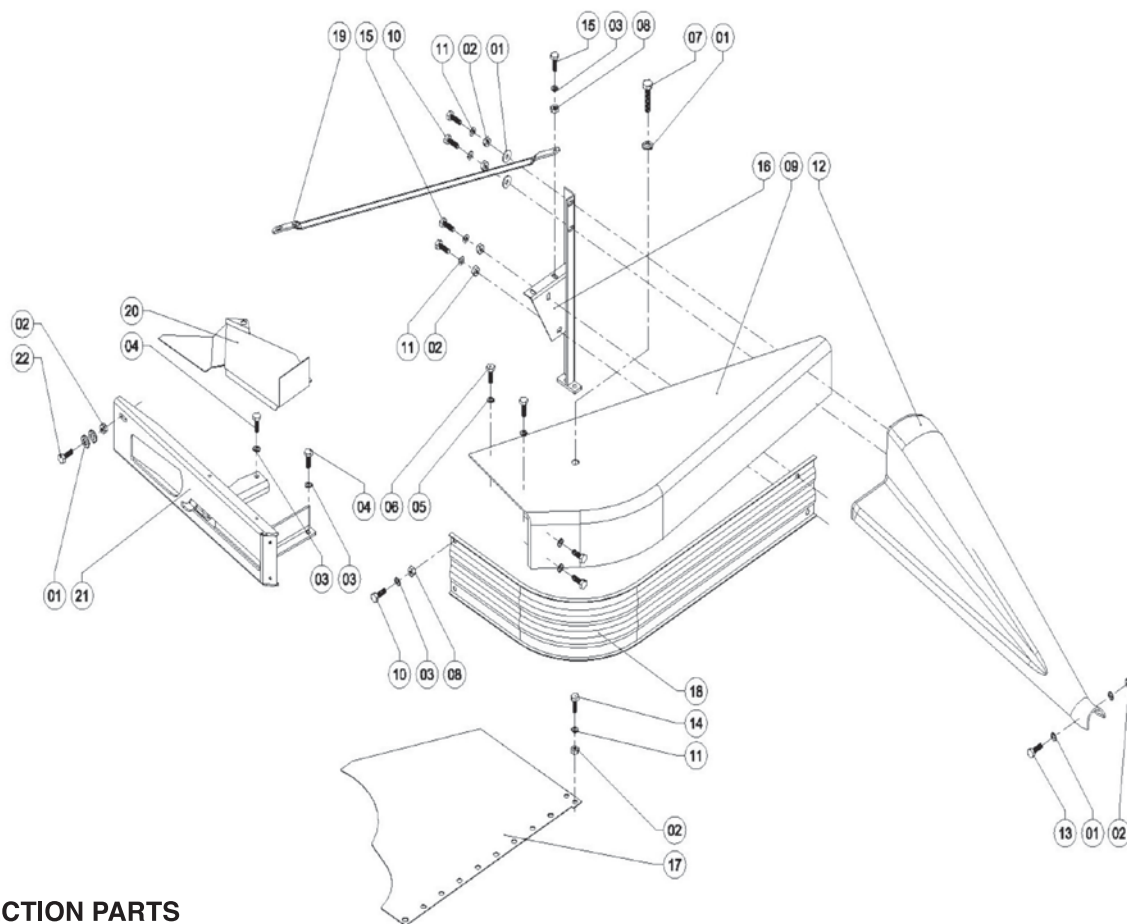
RIGHT PROTECTION PARTS





RIGHT PROTECTION PARTS

Pos No.	Amount	Order Number	Explanation	Norm	Old Number
01	1	93021.0000000.156	Hexagon Bolt		CİVATA AKB M8x1,25x16 8.8
02	6	93062.0000000.013	Plain Washer		RONDELÂ DÜZ M8
03	8	93082.0000000.015	Fibered Nuts		SOMUN FİBERLİ M8x1,25
04	1	92070.0600001.001 10600001.010.230510000	Linked Plastic Case Right Linked Welded Case Right		TBBMY-1.4.75
05	4	93063.0000000.004	Crinkled Spring Washer		RONDELÂ TIRTIRLI M8
06	1	93021.0000000.169	Hexagon Bolt		CİVATA AKB M8x1,25x90 8.8
07	1	10600001.010.230202000	Rope Spring		TBBMY-1.4.59
08	3	93021.0000000.158	Hexagon Bolt		CİVATA AKB M8x1,25x25 8.8
09	1	10600001.010.230192000	Rope Spring Connection Plate		TBBMY-1.4.58
10	1	10600001.010.230120000 10600001.010.230450000	Body Plate Medium "51" Body Plate narrow "38"		TBBMY-1.4.35 TBBMY-1.4.35B
11	1	10600001.010.230250000	Left Direction Plate		TBBMY-1.4.74
12	1	93021.0000000.162	Hexagon Bolt		CİVATA AKB M8x1,25x45x25 8.8
13	1	92070.0600001.004 10600001.010.230410000	Plastic Right Nose Welded Right Nose		TBBMY-1.4.73
14	2	93023.0000000.020	Imbus Bolt		CİVATA İMB M8x1,25x30 8.8
15	1	10600001.010.230270000	Right Connection Panel		TBBMY-1.4.76
16	4	93062.0000000.015	Plain Washer		RONDELA DÜZ 5/16" KALIN

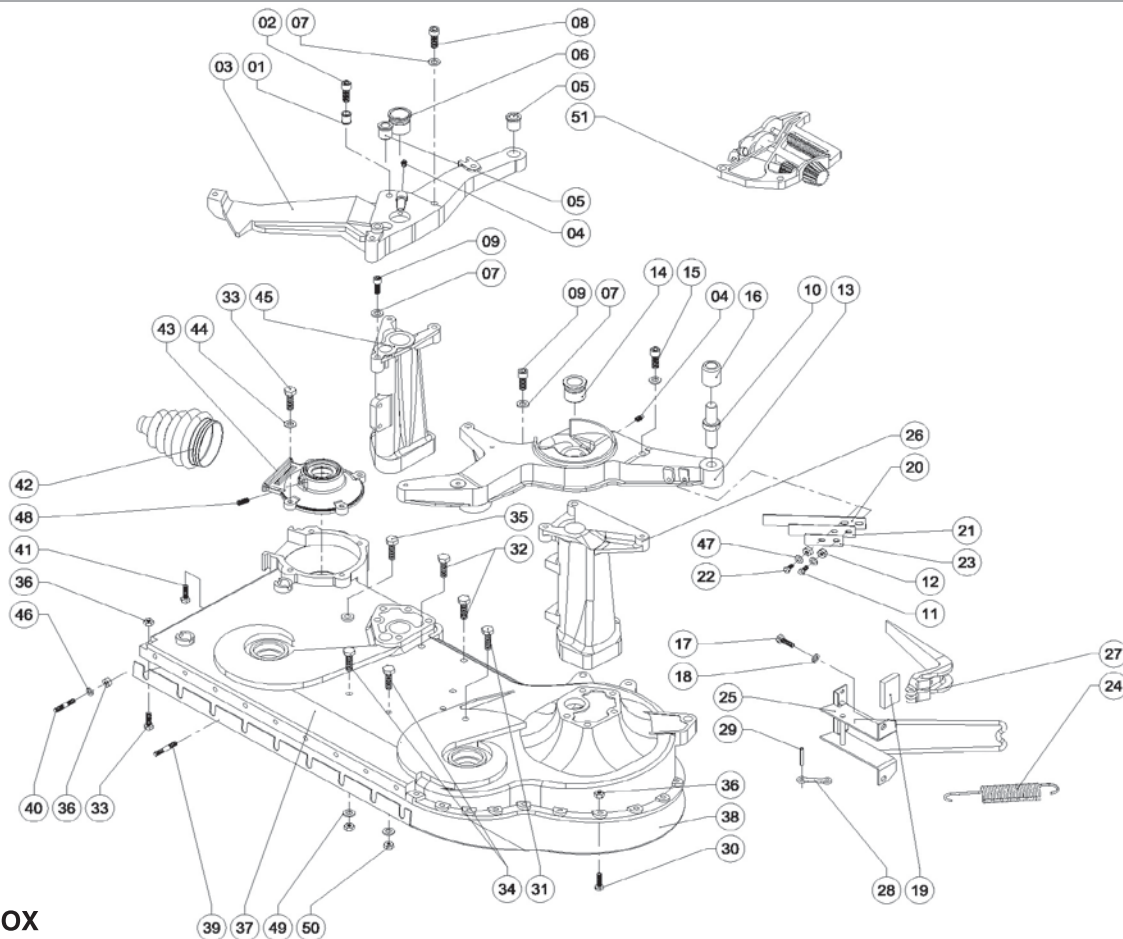


LEFT PROTECTION PARTS



LEFT PROTECTION PARTS

Pos No.	Amount	Order Number	Explanation	Norm	Old Number
01	5	93062.0000000.015	Plain Washer		RONDELÂ DÜZ 5/16" KALIN
02	8	93082.0000000.015	Fibered Nuts		SOMUN FİBERLİ M8x1,25
03	5	93063.0000000.004	Crinkled Spring Washer		RONDELÂ-TIRTIRLI M8
04	1	93021.0000000.157	Hexagon Bolt		CİVATA AKB M8x1,25x20 8.8
05	2	93062.0000000.012	Plain Washer		RONDELÂ DÜZ M6
06	4	93021.0000000.139	Hexagon Bolt		CİVATA AKB M6x1x16 8.8
07	1	93021.0000000.319	Hexagon Bolt		CİVATA AKB M8x1,25x75x25 8.8
08	3	93081.0000000.016	Plain Washer		SOMUN AKB M8x1,25 8.8
09	1	92070.0600001.002 10600001.010.230520000	Linked Plastic Case Left Linked Welded Case Left		TBBMY-1.4.60
10	5	93021.0000000.158	Hexagon Bolt		CİVATA AKB M8x1,25x25 8.8
11	6	93062.0000000.013	Plain Washer		RONDELA DÜZ M8
12	1	92070.0600001.003 10600001.010.230400000	Plastic Left Nose Welded Left Nose		TBBMY-1.4.62
13	1	93021.0000000.162	Hexagon Bolt		CİVATA AKB M8x1,25x45x25 8.8
14	2	93021.0000000.159	Hexagon Bolt		CİVATA AKB M8x1,25x30 8.8
15	2	93021.0000000.156	Hexagon Bolt		CİVATA AKB M8x1,25x16 8.8
16	1	10600001.010.230280000	Left Connection Panel		TBBMY-1.4.152
17	1	10600001.010.230350000 10600001.010.230460000	Narrow Zipka Protection Plate Left "51" Narrow Zipka Protection Plate Left "38"		TBBMY-1.4.103 TBBMY-1.4.103B
18	1	10600001.010.230220000	Left Direction Plate		TBBMY-1.4.61
19	1	10600001.010.230162000	Support		TBBMY-1.4.50
20	1	92150.0600001.074	Shuttle Protection Plate		TBBMY-1.4.1.41
21	1	10600001.010.230010030	Shuttle Case		TBBMY-1.4.1.5
22	1	-----	Round Head Bolt		CİVATA BBTA M8x1,25x25



CHAIN GEAR BOX

**CHAIN GEAR BOX**

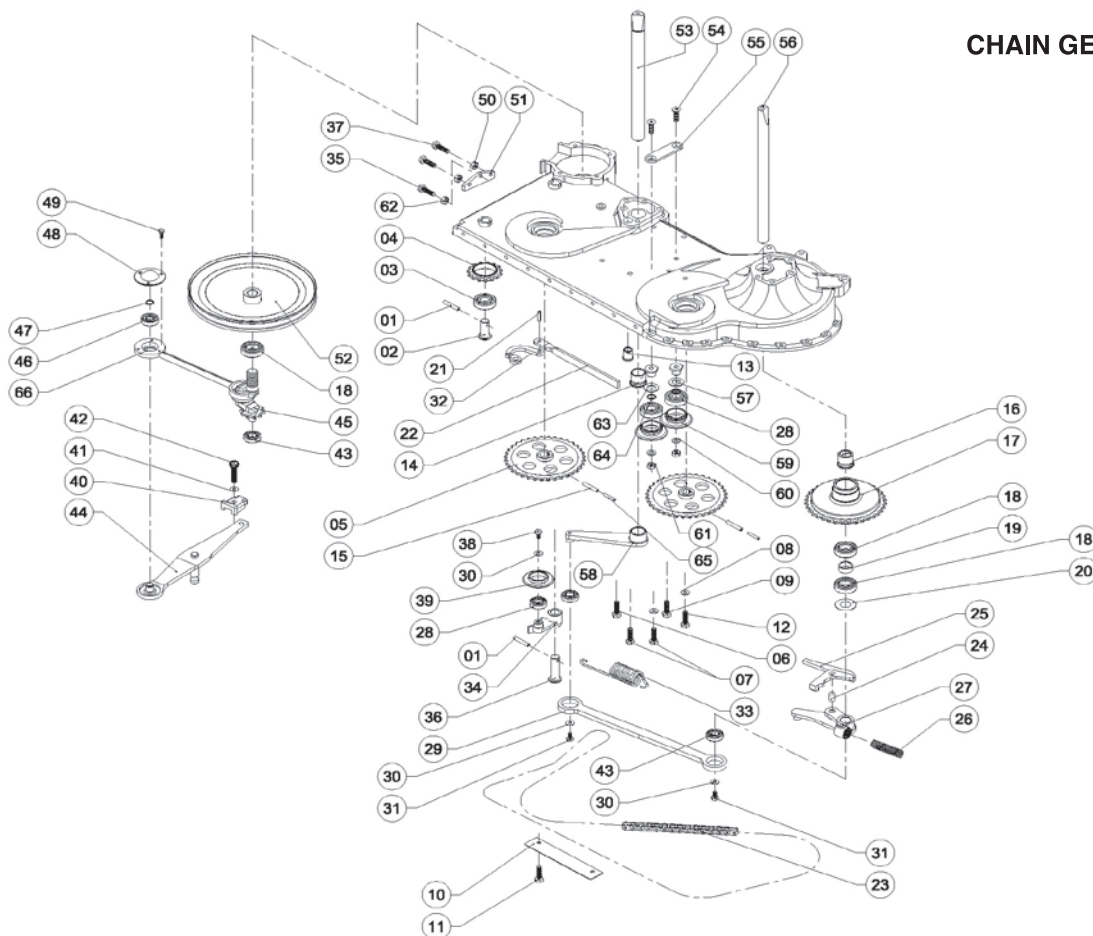
Pos No.	Amount	Order Number	Explanation	Norm	Old Number
01	1	92160.0600001.043	Upper Ratchet Nose Bushing		TBBMY-1.4.1.90
02	1	93023.0000000.007	Imbus Bolt		CİVATA İMB M10x1,5x50 8.8
03	1	10600001.010.230010050	Needle Carrier		TBBMY-1.4.1.14
04	2	93110.0000000.007	Plain Greaser		GRESÖRLÜK DÜZ M10
05	2	10600001.010.230010910	Ratchet Bushing		TBBMY-1.4.1.13
06	1	10600001.010.230010909	Big Shaft Upper Bushing		TBBMY-1.4.1.3
07	5	93063.0000000.001	Crinkled Spring Washer		RON-TIRTIRLI-M10
08	1	93023.0000000.006	Imbus Bolt		CİVATA İMB M10x1,5x40 8.8
09	2	93023.0000000.006	Imbus Bolt		CİVATA İMB M10x1,5x40 8.8
10	1	10600001.010.230010103	Upper Bedding Pin		TBBMY-1.4.1.39
11	1	93021.0000000.143	Hexagon Bolt		CİVATA AKB M6x1x30 8.8
12	2	93081.0000000.022	Non-fibered Nut		SOMUN AKB M6x1
13	1	10600001.010.230010101	Shuttle Carrier		TBBMY-1.4.1.36
14	1	10600001.010.230010130	Upper Small Shaft Bushing		TBBMY-1.4.1.43
15	1	93023.0000000.007	Imbus Bolt		CİVATA İMB M10x1,5x55 8.8
16	1	92160.0600001.050	Rail Ring		TBBMY-1.4.26
17	2	93021.0000000.139	Hexagon Bolt		CİVATA AKB M6x1x16 8.8
18	2	93062.0000000.004	Plain Washer		RONDELÂ DÜZ M10
19	1	10600001.010.230180040	Rubber Skid		TBBMY-1.4.55.6
20	1	10600001.010.230010932	Long Spring Plate		TBBMY-1.4.27
21	1	10600001.010.230010942	Medium Spring Plate		TBBMY-1.4.28
22	1	93021.0000000.291	Hexagon Bolt		CİVATA AKB M6x1x40x20 8.8
23	1	10600001.010.230010952	Short Spring Plate		TBBMY-1.4.29
24	1	10600001.010.230180032	Ratchet Spring		TBBMY-1.4.55.4
25	1	10600001.010.230180010	Launcher Frame		TBBMY-1.4.55.1

**CHAIN GEAR BOX**

Pos No.	Amount	Order Number	Explanation	Norm	Old Number
26	1	10600001.010.230010090	Left Main Strap		TBBMY-1.4.1.31
27	1	10600001.010.230180020	Launcher Lever		TBBMY-1.4.55.3
28	1	92150.0600001.104	Power Transmission Plate		TBBMY-1.4.55.2
29	2	93200.0000000.001	Spring Pin		YARIKLI PİM Ø5x30
30	22	93021.0000000.158	Hexagon Bolt		CİVATA AKB M8x1,25x25 8.8
31	1	93021.0000000.169	Hexagon Bolt		CİVATA AKB M8x1,25x90 8.8
32	2	93021.0000000.244	Hexagon Bolt		CİVATA AKB M8x1,25x95 8.8
33	6	93021.0000000.293	Hexagon Bolt		CİVATA AKB M8x1,25x35x25 8.8
34	2	93021.0000000.168	Hexagon Bolt		CİVATA AKB M8x1,25x75 8.8
35	1	93021.0000000.152	Hexagon Bolt		CİVATA AKB M8x1,25x110 8.8
36	35	93081.0000000.016	Non-fibered Nut		SOMUN AKB M8x1,25 8.8
37	1	10600001.010.230010010	Casted Body		TBBMY-1.4.1.1
38	1	92150.0600001.077	Casted Lower Protection Plate		TBBMY-1.4.1.68
39	2	92160.0600001.042	Roof Bolt Short		TBBMY-1.4.1.100
40	7	92160.0600001.042	Roof Bolt		TBBMY-1.4.1.82
41	3	93021.0000000.156	Hexagon Bolt		CİVATA AKB M8x1,25x16 8.8
42	1	92210.0600001.002	Blower		TBBMY-1.4.86
43	1	10600001.010.230010060	Crank Input Cover		TBBMY-1.4.1.22
44	4	93062.0000000.013	Plain Washer		RONDELÂ DÜZ M8
45	1	10600001.010.230010220	Right Main Strap		TBBMY-1.4.1.19
46	9	93064.0000000.008	Spring Washer		RONDELA YAYLI M8
47	2	93064.0000000.007	Spring Washer		RONDELA YAYLI M6
48	1	93027.0000000.002	Setskur Bolt		CİVATA SETSKUR M8x1,25x16 8.8
49	6	93062.0000000.015	Washer		RONDELA DÜZ 5/16" KALIN
50	6	93082.0000000.015	Fibered Nut		SOMUN FİBERLİ M8x1,25
51	1	92210.0600001.001	Shuttle Reaper-Binder		TBBMY-1.4.1.11



CHAIN GEAR BOX



**CHAIN GEAR BOX**

Pos No.	Amount	Order Number	Explanation	Norm	Old Number
01	2	93200.0000000.020	Spring Pin		YARIKLI PİM Ø8x30
02	1	92160.0600001.040	Chain Gear Pin		TBBMY-1.4.1.65
03	1	93071.0000000.040	Bearing		RULMAN 6304 C3 2RS
04	1	92120.0600001.006	Chain Gear Z=15		TBBMY-1.4.1.74
05	2	92160.0600001.067	Big Chain Gear		TBBMY-1.4.1.79
06	2	93023.0000000.006	Imbus Bolt		CİVATA İMB M10x1,5x40 8.8
07	4	93023.0000000.006	Imbus Bolt		CİVATA İMB M10x1,5x40 8.8
08	10	93063.0000000.001	Crinkled Spring Washer		RON-TIRTIRLI-M10
09	3	93023.0000000.006	Imbus Bolt		CİVATA İMB M10x1,5x40 8.8
10	1	92150.0600001.078	Zincir Sacı		TBBMY-1.4.1.70
11	2	93021.0000000.155	Hexagon Bolt		CİVATA AKB M8x1,25x15 8.8
12	1	93023.0000000.008	Imbus Bolt		CİVATA İMB M10x1,5x75 8.8
13	1	10600001.010.230010900	Small Shaft Lower Bushing		TBBMY-1.4.1.86
14	1	10600001.010.230010800	Large Shaft Lower Bushing		TBBMY-1.4.1.81
15	2	93200.0000000.015	Spring Pin		YARIKLI PİM Ø8x45
16	1	10600001.010.230010800	Large Shaft Lower Bushing		TBBMY-1.4.1.81
17	1	10600001.010.230010700	Dish Gear Box		TBBMY-1.4.1.80
18	3	93071.0000000.011	Bearing		RULMAN 6205 2RS C3
19	1	10600001.010.230010600	Distance Bushing		TBBMY-1.4.1.78
20	1	92150.0600001.071	Special Washer		TBBMY-1.4.1.26
21	1	93021.0000000.162	Depth Cut Bolt 15mm		CİVATA AKB M8x1,25x45x25
22	1	92160.0600001.064	Automatic Rod		TBBMY-1.4.1.88
23	1	93231.0000000.009	Roller Chain 260cm		ZİNCİR MAKARALI 5/8"x1/4"-260 cm
24	1	10600001.010.230010403	Casted Joint Pin		TBBMY-1.4.1.75.03
25	1	10600001.010.230010402	Internal Casted Lever Arm		TBBMY-1.4.1.75.02

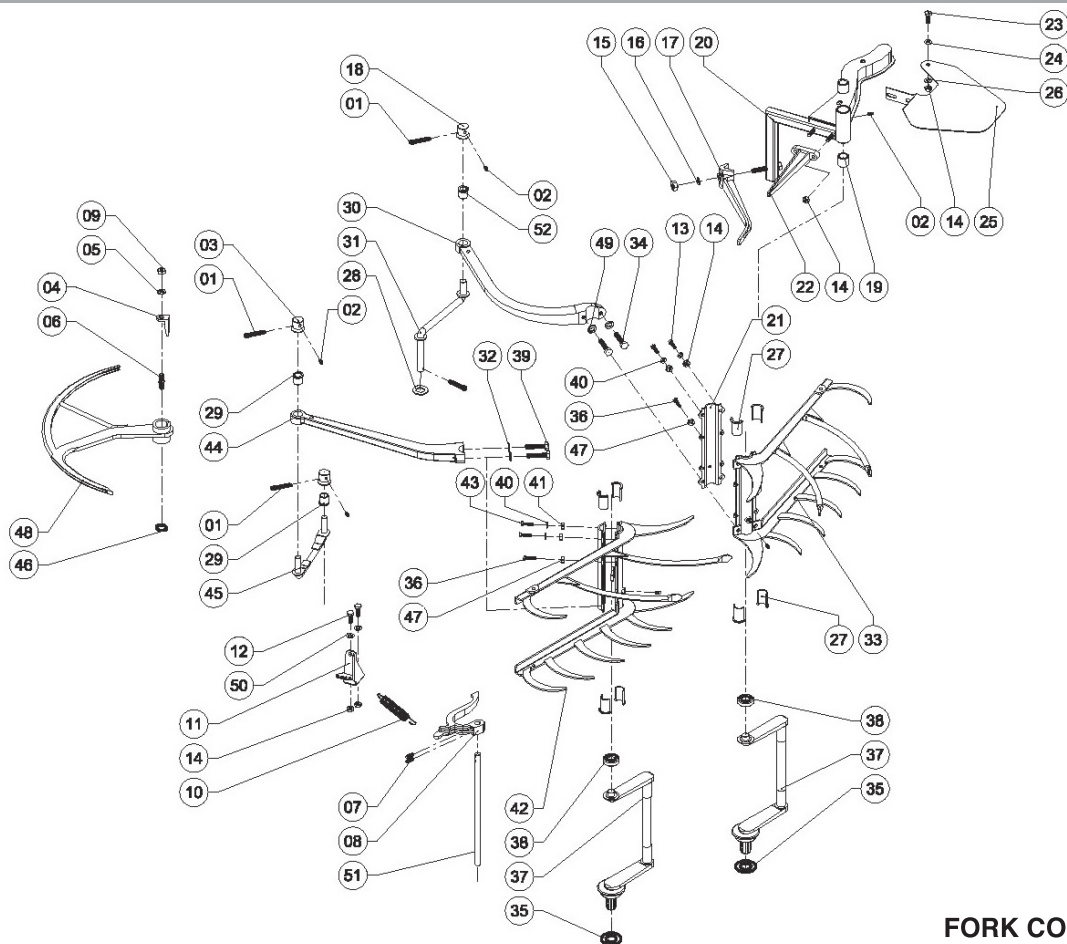


CHAIN GEAR BOX

Pos No.	Amount	Order Number	Explanation	Norm	Old Number
26	1	10600001.010.230010520	Automatic Spring		TBBMY-1.4.1.76
27	1	10600001.010.230010401	Outer Casted Lever Arm		TBBMY-1.4.1.75.01
28	3	93071.0000000.003	Bearing		RULMAN 6004 C3 2RS
29	1	92020.0600001.012 92160.0600001.069	In-Casting Movement Lever (Casting) In-Casting Movement Lever (Iron Plate)		TBBMY-1.4.1.73
30	2	93062.0000000.014	Plain Washer		RONDELÂ DÜZ 3/8" KALIN
31	3	93021.0000000.157	Hexagon Bolt		CİVATA AKB M8x1,25x20
32	1	10600001.010.230010160	Bundle In-Casting Ratchet		TBBMY-1.4.1.55
33	1	10600001.010.230010172	Tension Spring		TBBMY-1.4.1.60
34	1	10600001.010.230010180	Casting Take-up		TBBMY-1.4.1.61
35	1	93021.0000000.019	Hexagon Bolt		CİVATA AKB M10x1,5x75
36	1	92160.0600001.039	Tension pin		TBBMY-1.4.1.62
37	2	93021.0000000.009	Hexagon Bolt		CİVATA AKB M10x1,5x25
38	1	93021.0000000.157	Hexagon Bolt		CİVATA AKB M8x1,25x20
39	1	10600001.010.230010907	Chain Take-up		TBBMY-1.4.1.58
40	1	10600001.010.230300000	Nose Skid		TBBMY-1.4.89
41	1	93062.0000000.004	Plain Washer		RON-DUZ-M10
42	1	93021.0000000.007	Hexagon Bolt		CİVATA AKB M10x1,5x16
43	3	93071.0000000.009	Bearing		RULMAN 6203 C3 2RS
44	1	10600001.010.230290000	Cutter Drive Lever		TBBMY-1.4.87
45	1	10600001.010.230010070	Crank Shaft Lower Installation		TBBMY-1.4.1.24
46	1	93072.0000000.001	Bearing		RULMAN 1203
47	1	93261.0000000.004	Shaft Ring		SEGMAN MİL DIN471 Ø17x1 CK75
48	1	10600001.010.230320000	Bearing Cover Plate		TBBMY-1.4.94
49	3	93021.0000000.137	Hexagon Bolt		CİVATA AKB M6x1x12
50	2	93082.0000000.001	Fibred Nut		SOM-FIB-M10x1,5

**CHAIN GEAR BOX**

Pos No.	Amount	Order Number	Explanation	Norm	Old Number
51	1	10600001.010.230010140	Take-up Bolt Bed		TBBMY-1.4.1.48
52	1	10600001.010.230330000	Crank Shaft Pulley		TBBMY-1.4.98
53	1	10600001.010.230010906	Large Body Shaft		TBBMY-1.4.1.6
54	2	93022.0000000.005	Countersunk Imbus Bolt		CİVATA HB İMB M10x1,5x45
55	1	10600001.010.230010904	Take-up Plate		TBBMY-1.4.1.93
56	1	10600001.010.230010905	Small Shaft		TBBMY-1.4.1.40
57	2	92160.0600001.061	Take-up Short Bearing House		TBBMY-1.4.1.96
58	1	10600001.010.230010200	Large Shaft Lower Lever		TBBMY-1.4.1.71
59	2	92160.0600001.062	Transmission Chain Holder		TBBMY-1.4.1.97
60	2	93062.0000000.014	Plain Washer		RON-DUZ-3/8"
61	2	93082.0000000.001	Fibered Nut		SOM-FİB-M10x1,5
62	1	93081.0000000.001	Non-Fibered Nut		SOM-DÜZ-M10x1,5
63	2	92150.0600001.151	Special Take-up Washer		TBBMY-1.4.1.101
64	2	93061.0000000.011	Copper Washer		RONDELÂ BAKIR M22
65	2	93200.0000000.004	Spring Pin		YARIKLI PİM Ø5x45
66	1	92160.0600001.071 10600001.010.23001007	Connecting Rod Connecting Rod Sub-production		TBBMY-1.4.1.24.2



FORK CONTROL PARTS

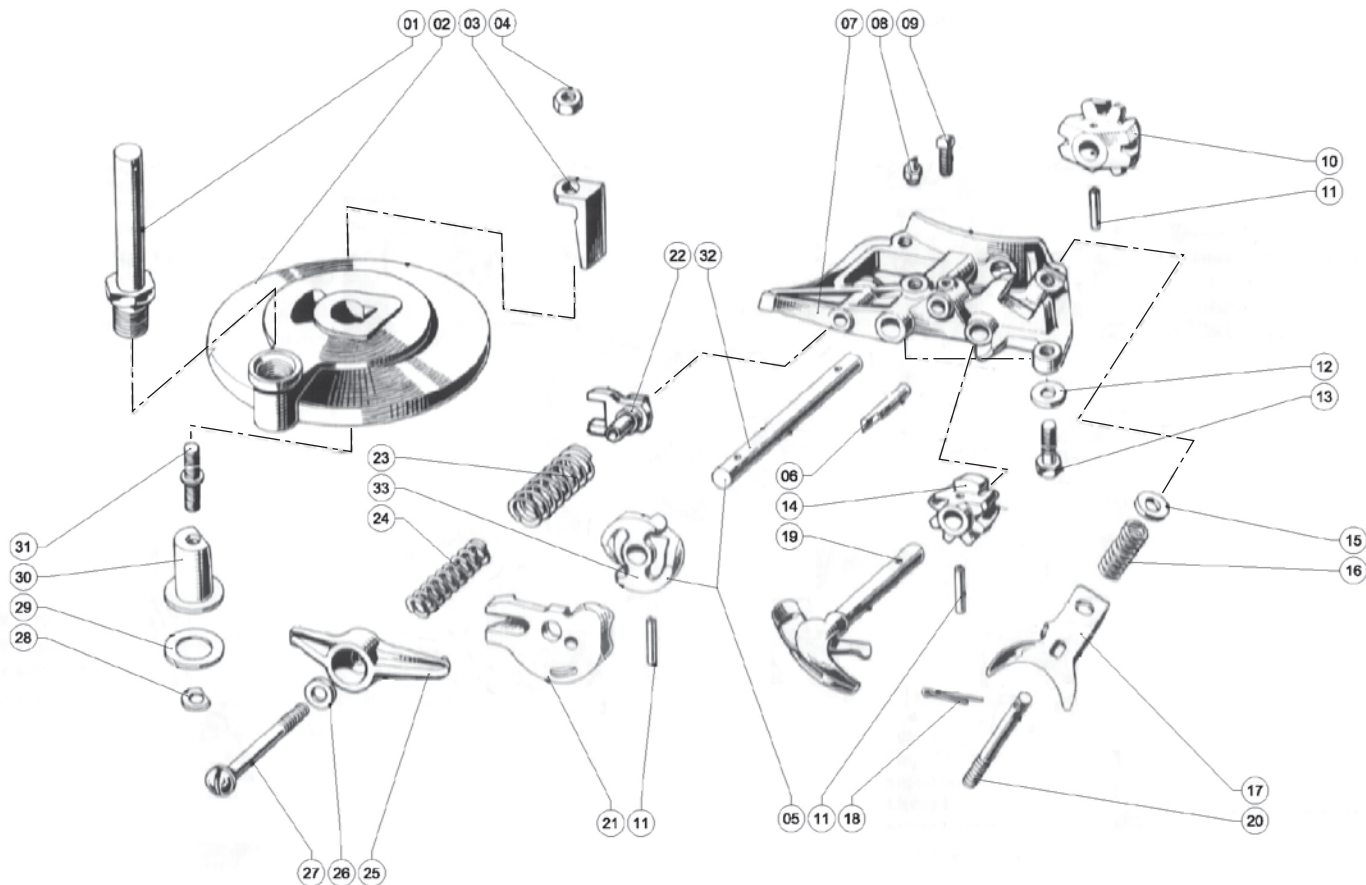
**FORK CONTROL PARTS**

Pos No.	Amount	Order Number	Explanation	Norm	Old Number
01	4	93120.0000000.005	Cotter Pin	DIN94	KOPİLYA 4X50
02	6	93110.0000000.006	Greaser		GRESÖRLÜK DÜZ M8
03	2	92160.0600001.047	Small Bonnet		TBBMY-1.4.8
04	1	92160.0600001.029	Top Cotter		TBBMY-1.4.1.2
05	1	93062.0000000.004	Plain Washer		RONDELA DÜZ M10
06	1	92160.0600001.037	Roof Bolt		TBBMY-1.4.1.45
07	2	93200.0000000.003	Spring Pin		YARIKLI PİM Ø5x40
08	1	10600001.010.230010041	Bundle Ratchet		TBBMY-1.4.1.9
09	1	93081.0000000.001	Non-Fibered Nut		SOMUN AKB M10x1,5
10	1	10600001.010.230362000	Launcher Spring		TBBMY-1.4.104
11	1	10600001.010.230342000	Spring Level Adjuster		TBBMY-1.4.100
12	2	93021.0000000.158	Hexagon Bolt		CİVATA AKB M8x1,25x25 8.8
13	4	93021.0000000.139	Hexagon Bolt		CİVATA AKB M6x1x16 8.8
14	7	93082.0000000.015	Fibered Nut		SOMUN FİBERLİ M8x1,25
15	1	93082.0000000.001	Fibered Nut		SOMUN FİBERLİ M10x1,5
16	1	93062.0000000.004	Plain Washer		RONDELÂ DÜZ M10
17	1	10600001.010.230060000	Bundle Ejector Medium Lever		TBBMY-1.4.12
18	1	92160.0600001.046	Large Bonnet		TBBMY-1.4.2
19	2	10600001.010.230050026	Bearing Bush		TBBMY-1.4.11.3.06
20	1	10600001.010.230050020	Upper Movement Transmitter		TBBMY-1.4.11.3
21	2	10600001.010.230070010	Collector Twine Plate		TBBMY-1.4.20.04
22	1	10600001.010.230050010	Bundle Ejector Upper Lever		TBBMY-1.4.11.2
23	1	93021.0000000.158	Hexagon Bolt		CİVATA AKB M8x1,25x25 8.8
24	1	93062.0000000.013	Plain Washer		RONDELÂ DÜZ M8
25	1	10600001.010.230490000	Shuttle Protection Plate		TBBMY-1.4.11.1
26	1	93062.0000000.015	Plain Washer		RONDELÂ DÜZ 5/16" KALIN



FORK CONTROL PARTS

Pos No.	Amount	Order Number	Explanation	Norm	Old Number
27	8	10600001.010.230430000	Collector Lever Bedding Bushing (Half)		TBBMY-1.4.21
28	1	93062.0000000.007	Plain Washer		RONDELÂ DÜZ M16
29	2	10600001.010.230090000	Small Holed Small Bushing		TBBMY-1.4.22
30	1	10600001.010.230030000	Left Collector Actuator		TBBMY-1.4.4
31	1	10600001.010.230040000	Large Joint		TBBMY-1.4.5
32	2	93064.0000000.008	Plain Washer		RONDELA YAYLI M8
33	1	10600001.010.230070000	Left Lower Collector		TBBMY-1.4.20
34	2	93023.0000000.021	Imbus Bolt		CİVATA İMB M8x1,25x35 8.8
35	2	92150.0600001.071	Special Washer		TBBMY-1.4.1.26
36	4	93021.0000000.139	Hexagon Bolt		CİVATA AKB M6x1x16 8.8
37	1	10600001.010.230010081	Collector Lever		TBBMY-1.4.1.27
38	2	93071.0000000.009	Bearing		RULMAN 6203 C3 2RS
39	2	93023.0000000.019	Imbus Bolt		CİVATA İMB M8x1,25x25 8.8
40	4	93063.0000000.004	Washer		RON-TIRTIRLI-M8
41	2	93081.0000000.016	Non-Fibered Nut		SOMUN AKB M8x1,25 8.8
42	1	10600001.010.230075000	Right Lower Collector		TBBMY-1.48
43	2	93021.0000000.158	Hexagon Bolt		CİVATA AKB M8x1,25x25 8.8
44	1	10600001.010.230130000	Lower Collector Actuator		TBBMY-1.4.38
45	1	10600001.010.230170000	Bi-directional Bedder		TBBMY-1.4.51
46	1	93261.0000000.019	Ring		SEGMAN MİL DIN471 Ø30x2 CK75
47	4	93082.0000000.014	Fibered Nut		SOM-FIB-M6x1
48	1	10600001.010.230010020	Rope Anchor		TBBMY-1.4.1.4
49	2	93064.0000000.008	Spring Washer		RONDELÂ YAYLI M8
50	2	93062.0000000.013	Plain Washer		RONDELÂ DÜZ M8
51	1	10600001.010.230010042	Ratchet Shaft		TBBMY-1.4.1.12
52	1	10600001.010.230020000	Large Holder Small Bushing		TBBMY-1.4.3



SHUTTLE PARTS



SHUTTLE PARTS

Pos No.	Amount	Order Number	Explanation	Norm	Old Number
01	1	10600001.010.230502000	Dish Gear Box Bolt		TBBMY-1.4.24
02	1	10600001.010.230010113	Shuttle Movement Gear Box		TBBMY-1.4.1.42
03	1	10600001.010.230010232	Roof Cotter		TBBMY-1.4.1.2
04	2	93082.0000000.001	Fibered Nut		SOMUN FİBERLİ M10x1,5
05	1	32020.0600001.005	Installer Rope Holder Wheel Pin and Bearing		TBBMY-1.4.1.11.5
06	1	32020.0600001.004	Rope Cutter Blade		TBBMY-1.4.1.11.6
07	1	32020.0600001.001	Shutter Body		TBBMY-1.4.1.11.7
08	1	93110.0000000.007	Greaser		GRESÖRLÜK DÜZ M10
09	1	93023.0000000.017	Imbus Bolt		CİVATA İMB M8x1,25x16 8.8
10	1	32120.0600001.002	Rope Holder Wheel Drive Gear		TBBMY-1.4.1.11.10
11	1	93200.0000000.001	Spring Pin		YARIKLI PİM Ø5x25
12	1	93062.0000000.004	Plain Washer		RONDELÂ DÜZ M10
13	1	93021.0000000.013	Hexagon Bolt		CİVATA AKB M10x1,5x45 8.8
14	1	32120.0600001.001	Long Nose Drive Gear		TBBMY-1.4.1.11.14
15	1	93062.0000000.004	Plain Washer		RONDELA DÜZ M10
16	1	32060.0600001.001	Long Nose Tension Spring		TBBMY-1.4.1.11.16
17	1	32020.0600001.002	Long Nose Presser		TBBMY-1.4.1.11.17

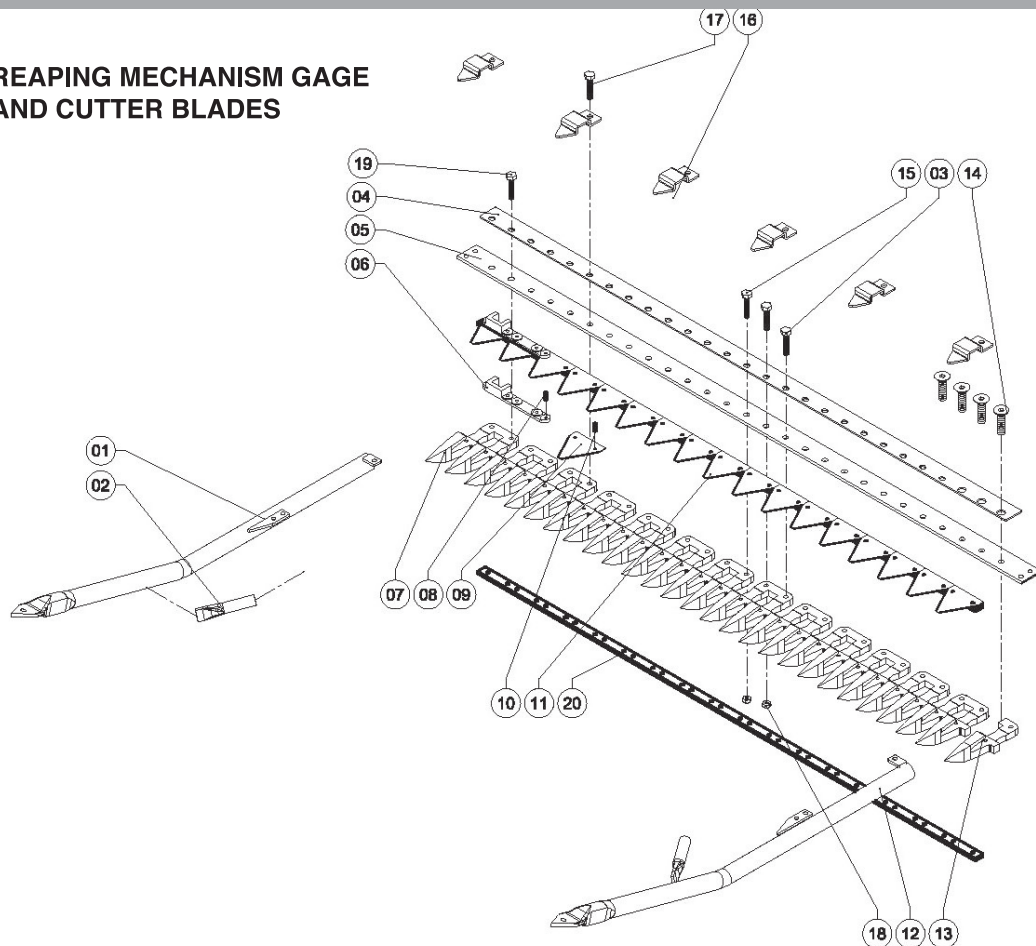


SHUTTLE PARTS

Pos No.	Amount	Order Number	Explanation	Norm	Old Number
18	1	93120.0000000.001	Cotter Pin	DIN94	KOPİLYA 3x30
19	1	32160.0600001.002	Pliers		TBBMY-1.4.1.11.19
20	1	32160.0600001.003	Long Nose Presser Attaching Stud		TBBMY-1.4.1.11.20
21	1	32020.0600001.003	Rope Holder Wheel Presser		TBBMY-1.4.1.11.21
22	1	32160.0600001.004	Spring Fulcrum		TBBMY-1.4.1.11.22
23	1	32060.0600001.002	Rope Holder Wheel External Presser Spring		TBBMY-1.4.1.11.23
24	1	32060.0600001.003	Rope Holder Wheel Internal Presser Spring		TBBMY-1.4.1.11.24
25	1	32160.0600001.005	Rope Holder Wheel Presser Lever		TBBMY-1.4.1.11.25
26	1	93062.0000000.013	Plain Washer		RONDELÂ DÜZ M8
27	1	...	Special Washer		Özel Cıvata
28	1	93062.0000000.004	Plain Washer		RONDELÂ DÜZ M10
29	1	93210.0000000.017	Raynel		SIM 25x36x1,00
30	1	10600001.010.230010120	Roof Camshaft		TBBMY-1.4.1.44
31	1	92160.0600001.037	Roof Stud		TBBMY-1.4.1.45
32	1	...	Rope Holder Wheel Pin Shaft		TBBMY-1.4.1.11.32
33	1	...	Rope Holder Wheel Pin Bearing		TBBMY-1.4.1.11.33



REAPING MECHANISM GAGE AND CUTTER BLADES



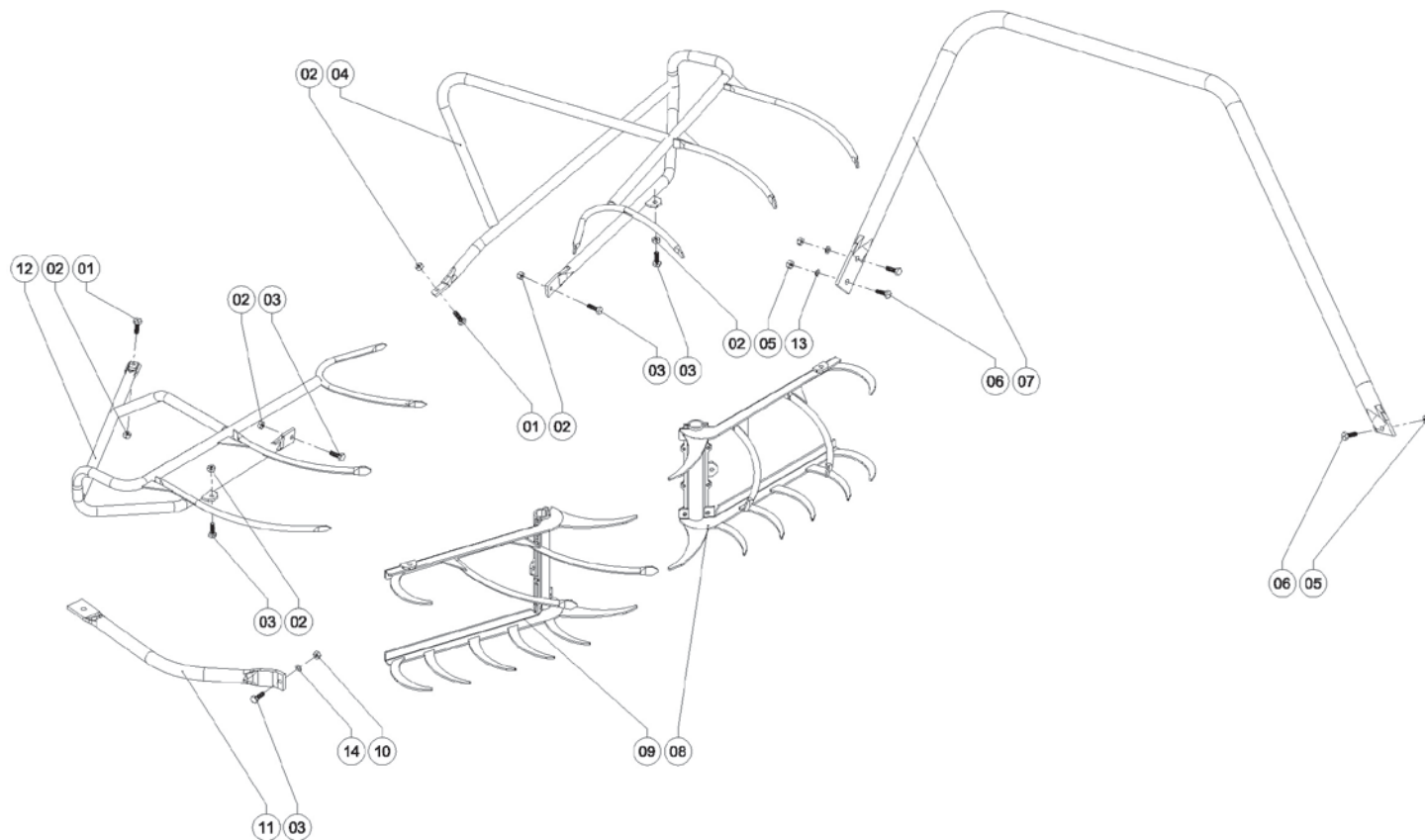


REAPING MECHANISM GAGE AND CUTTER BLADES

Pos No.	Amount	Order Number	Explanation	Norm	Old Number
01	1	10600001.010.230370000	Right Nose Frame		TBBMY-1.4.105
02	2	10600001.010.230240000	Zipka Fixing Pipe		TBBMY-1.4.66
03	1	93021.0000000.008	Hexagon Bolt		CİVATA AKB M10x1,5x20 8.8
04	1	10600001.010.230380000 10600001.010.230470000	Cutter Blade Upper Plate "51" Cutter Blade Upper Plate "38"		TBBMY-1.4.39 TBBMY-1.4.39B
05	1	10600001.010.230140000 10600001.010.230480000	Blade Mounting Nut "51" Blade Mounting Nut "38"		TBBMY-1.4.40 TBBMY-1.4.40B
06	1	10600001.010.230150010	Movement Transmitter Body		TBBMY-1.4.41.1
07	13	92040.0600001.001 92040.0600001.004	Zipka "51" Zipka "38"		TBBMY-1.4.43 TBBMA-1.4.43 DAR
08	5	93191.0000000.003	Rivet		PERÇİN DEMİR 5x20
09	17	92080.0600001.002	CUTTER 2 D-2466		TBBMY-1.4.41.05
10	29	93191.0000000.002	Rivet		PERÇİN DEMİR 5x12
11	1	10600001.010.230150000	Cutter Set Installation		TBBMY-1.4.41
12	1	10600001.010.230230000	Left Nose Frame		TBBMY-1.4.65
13	1	10600001.010.230390000	Half Zipka		TBBMY-1.4.42
14	4	93022.0000000.004	Countersunk Imbus Bolt		CİVATA HB İMB M10x1.5x40
15	2	93021.0000000.014	Hexagon Bolt		CİVATA AKB M10x1,5x50 8.8
16	6	10600001.010.230110000	Cutter Presser Plate		TBBMY-1.4.34
17	6	93021.0000000.010	Hexagon Bolt		CİVATA AKB M10x1,5x30 8.8
18	27	93082.0000000.001	Fibered Nut		SOM-FIB-M10x1,5
19	17	93021.0000000.009	Hexagon Bolt		CİVATA AKB M10x1,5x25 8.8
20	1	92160.0600001.063	Cutter Fishplate		TBBMY-1.4.41.3



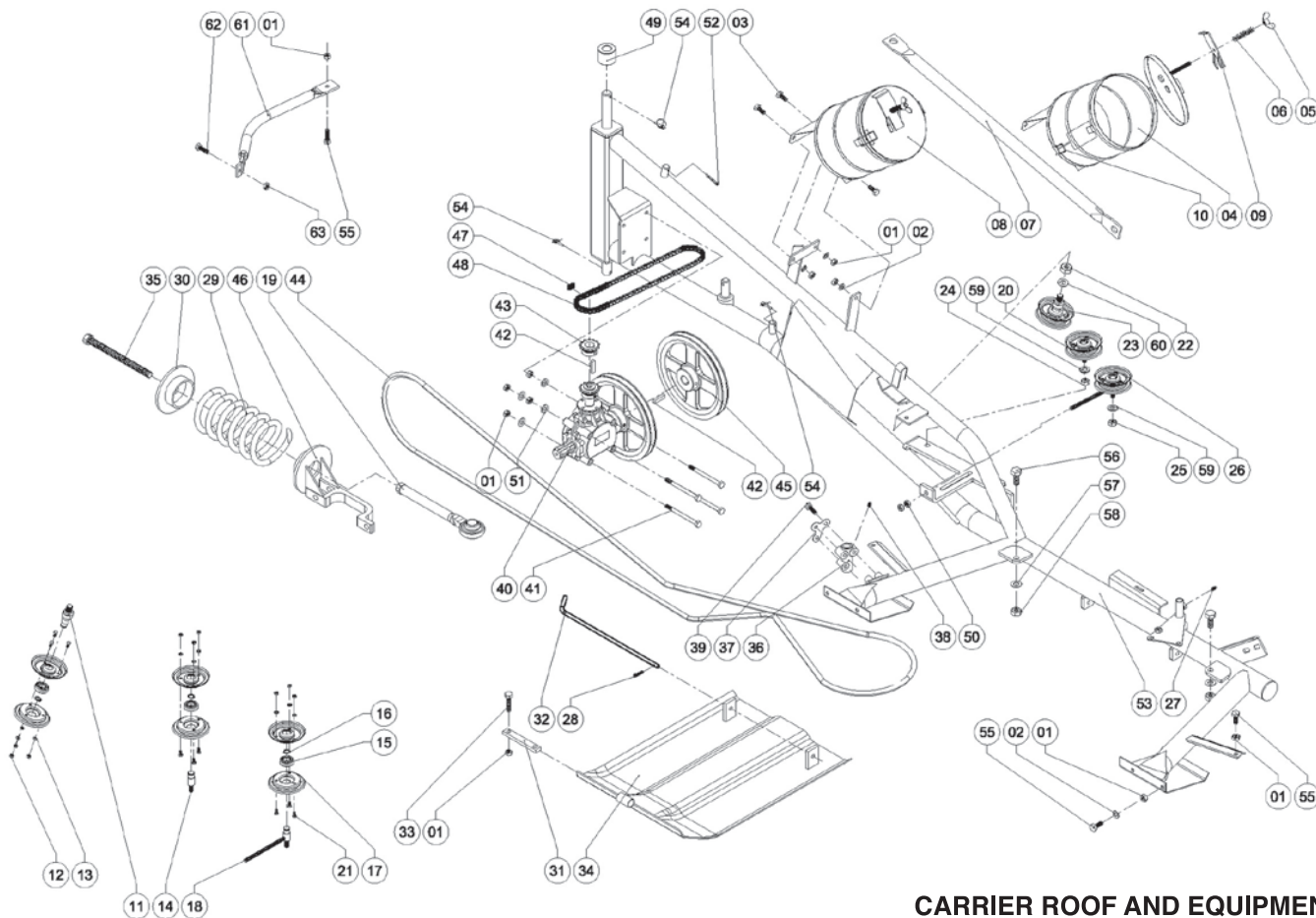
COLLECTOR FORKS





COLLECTOR FORKS

Pos No.	Amount	Order Number	Explanation	Norm	Old Number
01	2	93021.0000000.160	Hexagon Bolt		CİVATA AKB M8x1,25x35 8.8
02	6	93082.0000000.015	Fibered Nut		SOMUN FİBERLİ M8x1,25
03	5	93021.0000000.158	Hexagon Bolt		CİVATA AKB M8x1,25x25 8.8
04	1	10600001.010.230100000	Left Upper Collector		TBBMY-1.4.32
05	3	93082.0000000.001	Fibered Nut		SOMUN FİBERLİ M10x1,5
06	3	93021.0000000.009	Hexagon Bolt		CİVATA AKB M10x1,5x25 8.8
07	1	10600001.010.220000000	Cutter Long Connection Pipe		TBBMY-1.45
08	1	10600001.010.230075000	Right Lower Collector		TBBMY-1.48
09	1	10600001.010.230070000	Left Lower Collector		TBBMY-1.4.20
10	1	93082.0000000.015	Fibered Nut		SOMUN FİBERLİ M8x1,25
11	1	10600001.010.170000000	Cutter Short Connection Pipe		TBBMY-1.27
12	1	10600001.010.230310000	Right Upper Collector		TBBMY-1.4.91
13	2	93062.0000000.004	Plain Washer		RONDELÂ DÜZ M10
14	1	93062.0000000.013	Plain Washer		RONDELÂ DÜZ M8



CARRIER ROOF AND EQUIPMENT

**CARRIER ROOF AND EQUIPMENT**

Pos No.	Amount	Order Number	Explanation	Norm	Old Number
01	16	93082.0000000.001	Fibered Nut		SOMUN FİBERLİ M10x1,5
02	7	93061.0000000.007	Plain Washer		RONDELÂ BAKIR M10
03	3	93021.0000000.008	Hexagonal Bolt		CİVATA AKB M10x1,5x20 8.8
04	1	10600001.010.050010010	Rope Bucket		TBBMY-1.2.5.1.1
05	1	93083.0000000.003	Winged Nut		SOMUN SAC KELEBEK M10
06	1	10600001.010.050032000	Rope Tension Spring		TBBMY-1.2.5.3
07	1	10600001.101.000000000	Road Position Pipe		TBBMY-1.46
08	1	10600001.010.050000000	Rope Bucket Installation		TBBMY-1.2.5
09	1	92150.0600001.028	Rope Presser Plate		TBBMY-1.2.5.4
10	1	10600001.010.050022000	Locking Spring		TBBMY-1.2.5.2
11	1	10600001.010.030012000	Eccentric Pass Shaft		TBBMY-1.2.3.1
12	9	93081.0000000.022	Non-Fibered Nut		SOMUN AKB M6x1 8.8
13	9	93064.0000000.007	Spring Washer		RONDELÂ YAYLI M6
14	1	10600001.010.020012000	Pass Bushing		TBBMY-1.2.2.1.01
15	3	93071.0000000.009	Bearing		RULMAN 6203 C3 2RS
16	3	93261.0000000.004	Shaft Ring	DIN471	SEGMAN MİL Ø17x1 CK75
17	6	10600001.010.020022000	Belt Dish		TBBMY-1.2.2.2
18	1	10600001.010.040012000	Belt Take-up 1		TBBMY-1.2.2.1
19	1	10600001.010.141000000	Drawbar Spring Shaft		TBBMY-1.1.4
20	1	10600001.010.020000000	Belt Take-up Installation-3		TBBMY-1.2.4
21	9	93021.0000000.137	Hexagonal Bolt		CİVATA AKB M6x1x12 8.8

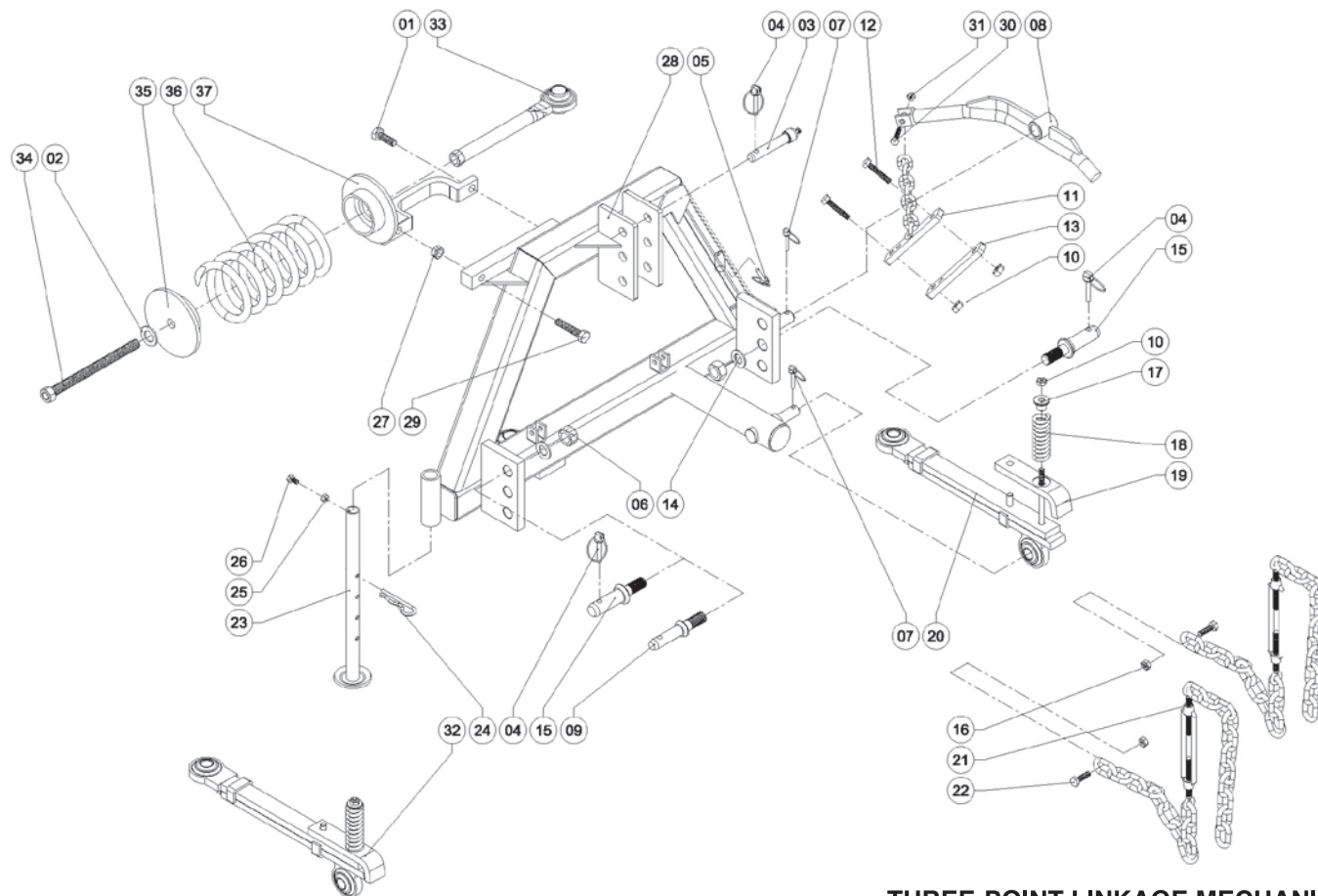
**CARRIER ROOF AND EQUIPMENT**

Pos No.	Amount	Order Number	Explanation	Norm	Old Number
22	1	93081.0000000.006	Fibered Nut		SOMUN AKB M16x2 8.8
23	1	10600001.010.030000000	Belt Take-up Installation -2		TBBMY-1.2.3
24	1	93081.0000000.003	Non-Fibered Nut		SOMUN AKB M12x1,75
25	1	93081.0000000.003	Non-Fibered Nut		SOMUN AKB M12x1,75
26	1	10600001.010.040000000	Belt Take-up Installation -1		TBBMY-1.2.2
27	1	93110.0000000.006	Greaser		GRESÖRLÜK DÜZ M8
28	1	93100.0000000.001	Hairpin		FİRKETE MAŞALI Ø3
29	1	10600001.010.120000000	Large Drawbar Spring		TBBMY-1.1.7
30	1	10600001.010.110000000	Drawbar Spring Outer Cover		TBBMY-1.1.10
31	1	92150.0600001.065	Sliding Shaft Plate		TBBMY-1.40
32	1	10600001.010.200000000	Lower Sliding Shaft		TBBMY-1.37
33	2	93021.0000000.015	Hexagonal Bolt		CİVATA AKB M10x1,5x55 8.8
34	1	10600001.010.210000000	Lower Slide (Small)		TBBMY-1.41
35	1	10600001.010.102000000	Spring Presser Adjuster		TBBMY-1.1.5
36	1	10600001.010.190000000	Movement Transmission Bushing		TBBMY-1.36
37	1	10600001.010.182000000	Safety Plate		TBBMY-1.35
38	1	93110.0000000.006	Greaser		GRESÖRLÜK DÜZ M8
39	3	93021.0000000.012	Hexagonal Bolt		CİVATA AKB M10x1,5x40 8.8
40	1	92160.0600001.066	Transmission Gear Installation		TBBMY-1.2.6
41	4	93021.0000000.003	Hexagonal Bolt		CİVATA AKB M10x1,5x120x25 8,8
42	2	93150.0000000.011	Strap	DIN6885	KAMA 8x7x35 A



CARRIER ROOF AND EQUIPMENT

Pos No.	Amount	Order Number	Explanation	Norm	Old Number
43	1	92120.0600001.001	Chain Gear Z=13		TBBMY-1.2.6.4
44	1	93030.0000000.039 93030.0000000.040	Belt Y Type Belt A Type		KAYIS-V 17X3950 KAYIS-V 17X4050
45	1	92020.0600001.001	Pulley		TBBMY-1.2.6.3
46	1	10600001.010.130000000	Drawbar Spring Body Connection		TBBMY-1.1.11
47	1	93232.0000000.002	Chain Lock		ZİNCİR KİLİDİ 08B-1 TAM
48	1	93231.0000000.006	Chain 100cm		ZİNCİR MAKARALI 08B-1/2 1x5-100cm
49	1	10600001.010.242000000	Drawbar Upper Bearing Bush		TBBMY-1.19
50	2	93081.0000000.001	Fibered Nut		SOMUN AKB M10x1,5
51	4	93062.0000000.004	Plain Washer		RONDELÂ DÜZ M10
52	1	93240.0000000.001	Pear shaped Cotter Pin		PİM ARMUT BAŞLI MAŞALI Ø6
53	1	92190.0600001.001	Main Body Chassis		TBBMY-1.2.1
54	3	93240.0000000.001	Pear shaped Cotter Pin		PİM ARMUT BAŞLI MAŞALI Ø6
55	6	93021.0000000.009	Hexagonal Bolt		CİVATA AKB M10x1,5x25 8.8
56	2	93021.0000000.080	Hexagonal Bolt		CİVATA AKB M14x2x60x35 8.8
57	2	93062.0000000.006	Plain Washer		RONDELÂ DÜZ M14
58	2	93081.0000000.005	Non-Fibered Nut		SOMUN AKB M14x2
59	2	93062.0000000.005	Plain Washer	DIN471	RONDELÂ DÜZ M12
60	1	93062.0000000.007	Plain Washer		RONDELÂ DÜZ M16
61	1	10600001.010.170000000	Cutter Short Connection Pipe		TBBMY-1.27
62	1	93021.0000000.157	Hexagonal Bolt		CİVATA AKB M8x1,25x20 8.8
63	1	93082.0000000.015	Fibered Nut		SOMUN FİBERLİ M8x1,25



THREE-POINT LINKAGE MECHANISM

**THREE-POINT LINKAGE MECHANISM**

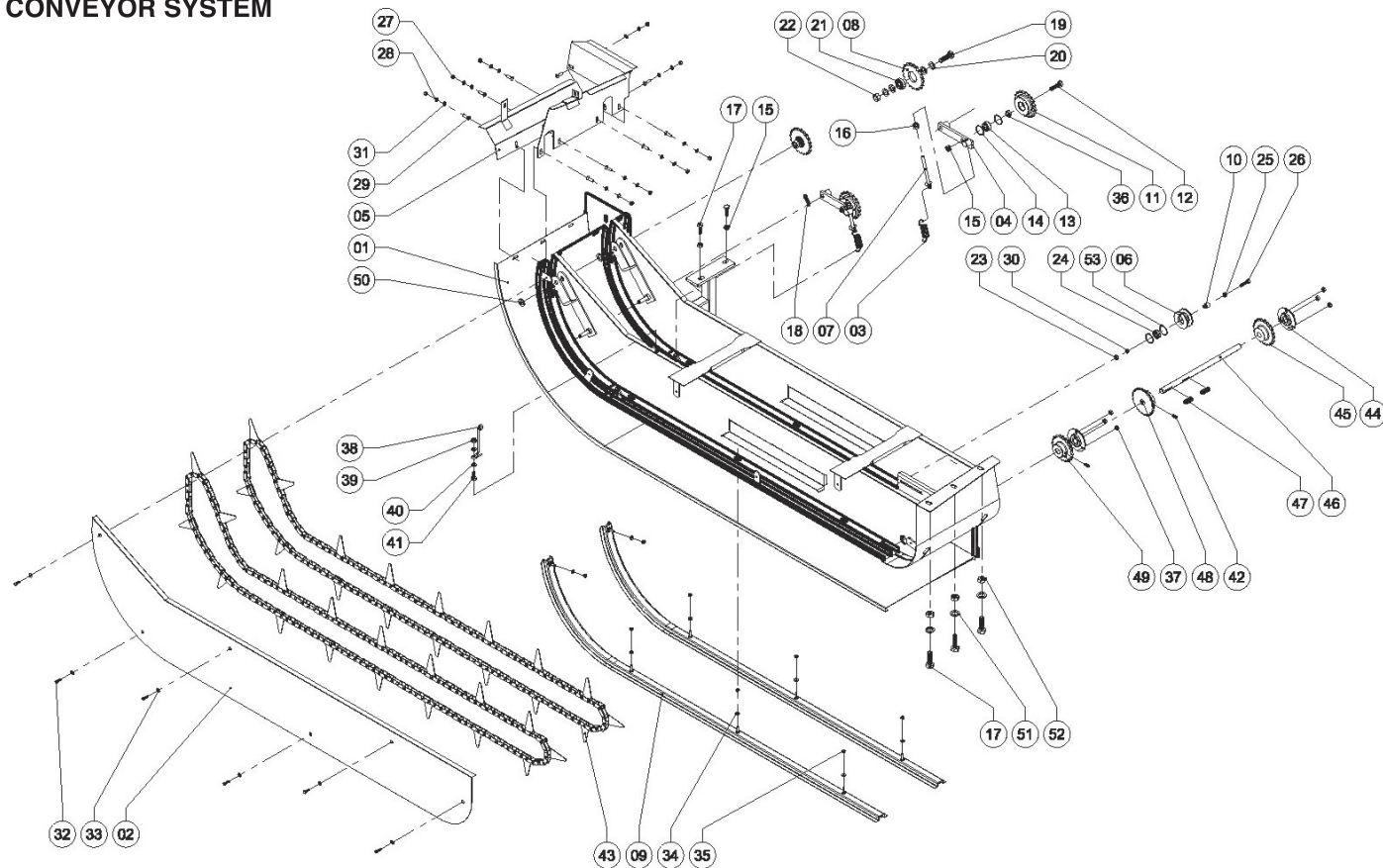
Pos No.	Amount	Order Number	Explanation	Norm	Old Number
01	1	93021.0000000.074	Hexagonal Bolt		CİVATA AKB M14x2x30 8.8
02	1	93062.0000000.009	Plain Washer		RONDELÂ DÜZ M20
03	1	10600001.072.000000000 92160.0600001.057	Drawbar Upper Linkage Pin		TBBMY-1.1.12
04	3	93240.0000000.003	Pear shaped Cotter Pin		PİM ARMUT BAŞLI MAŞALI Ø10
05	1	93240.0000000.001	Pear shaped Cotter Pin		PİM ARMUT BAŞLI MAŞALI Ø6
06	2	93081.0000000.009	Non-Fibered Nut		SOMUN AKB M22x1,5
07	2	93240.0000000.002	Pear shaped Cotter Pin		PİM ARMUT BAŞLI MAŞALI Ø8
08	1	10600001.010.150000000	Bended Chain Lever		TBBMY-1.1.3
09	1	10600001.052.000000000 92160.0600001.056	Drawbar Lower Linkage Pin		TBBMY-1.1.26
10	2	93082.0000000.001	Fibered Nut		SOMUN FİBERLİ M10x1,5
11	1	10600001.062.000000000	Safety Connection		TBBMY-1.1.8
12	2	93021.0000000.017	Hexagonal Bolt		CİVATA AKB M10x1,5x65x25 8.8
13	1	10600001.102.000000000	Chain Plate		TBBMY-1.1.8.01
14	2	93064.0000000.001	Spring Washer		RON-YAY-M10
15	2	10600001.032.000000000 92160.0600001.055	Drawbar Lower Thick Pin		TBBMY-1.1.6
16	2	93082.0000000.001	Fibered Nut		SOM-FIB-M10x1,5
17	1	10600001.010.160052000 92160.0600001.028	Safety Spring Bush		TBBMY-1.1.9.5
18	1	10600001.010.160042000	Safety Spring		TBBMY-1.1.9.4
19	1	10600001.010.160030000	Locking plate		TBBMY-1.1.9.3

**THREE-POINT LINKAGE MECHANISM**

Pos No.	Amount	Order Number	Explanation	Norm	Old Number
20	1	10600001.010.160010000 10600001.010.160020000 93021.0000000.005	Lower Safety Lock Upper Safety Lock Hexagonal Bolt		TBBMY-1.1.9.1 TBBMY-1.1.9.2 CİVATA AKB M10x1,5x140x30 8,8
21	2	10600001.042.000000000	Chain Take-up Installation		TBBMY-1.47
22	2	93021.0000000.012	Hexagonal Bolt		CİVATA AKB M10x1,5x40 8.8
23	1	10600001.022.000000000	Support Foot		TBBMY-1.1.2
24	1	93100.0000000.004	Hairpin		FİRKETE MAŞALI Ø6
25	2	93081.0000000.022	Hexagonal Bolt		SOMUN AKB M6x1
26	1	93021.0000000.139	Hexagonal Bolt		CİVATA AKB M6x1x16 8.8
27	1	93082.0000000.005	Fibered Nut		SOMUN FİBERLİ M14x2
28	1	10600001.010.090000000	Three Point Linkage		TBBMY-1.1.1
29	1	93021.0000000.080	Hexagonal Bolt		CİVATA AKB M14x2x60x35 8.8
30	1	93021.0000000.012	Hexagonal Bolt		CİVATA AKB M10x1,5x40 8.8
31	1	93082.0000000.001	Fibered Nut		SOMUN FİBERLİ M10x1,5
32	1	10600001.010.160000000	Safety Lock Installation		TBBMY-1.1.9
33	1	10600001.010.141000000	Drawbar Spring Shaft		TBBMY-1.1.4
34	1	10600001.010.102000000	Yay Presser Adjuster		TBBMY-1.1.5
35	1	10600001.010.110000000	Drawbar Spring Outer Cover		TBBMY-1.1.10
36	1	10600001.010.120000000	Large Drawbar Spring		TBBMY-1.1.7
37	1	10600001.010.130000000	Drawbar Spring Body Connection		TBBMY-1.1.11



CONVEYOR SYSTEM





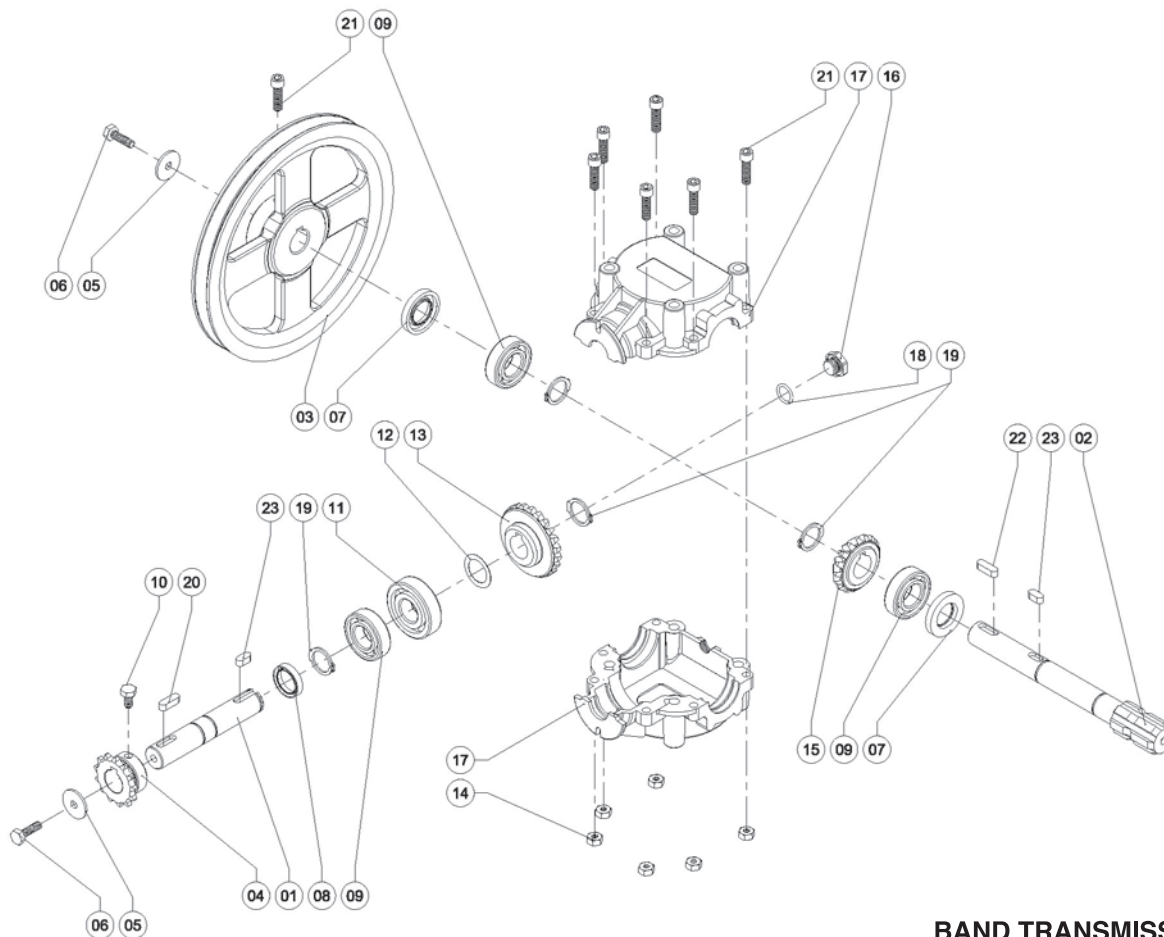
CONVEYOR SYSTEM

Pos No.	Amount	Order Number	Explanation	Norm	Old Number
01	1	92190.0600001.002 92190.0600001.004	Band Body Chassis Wide Band Body Chassis Narrow		TBBMY-1.3.1 TBBMA-1.3.1
02	1	10600001.091.000000000 10600005.091.000000000	Band Closing Panel for Wide Band Closing Panel for Narrow		TBBMY-1.3.2 TBBMA-1.3.2
03	2	10600001.010.070022000	Tension Spring		TBBMY-1.3.3
04	2	10600001.010.070030000	Tension Part		TBBMY-1.3.4
05	1	10600001.010.080000000 10600005.010.083000000	Throttle Wide Throttle Narrow		TBBMY-1.3.5 TBBMA-1.3.5
06	1	10600001.010.070042000	Chain Take-up		TBBMY-1.3.6
07	2	92160.0304101.017	M10x1.5x130 Connector Shaft		TUSP250A-1.2.15
08	2	92120.0600001.005	Chain Gear Box Z=20		TBBMY-1.3.8
09	2	32190.0600001.001	Ban Chain Rail		TBBMY-1.3.9
10	2	92160.0600001.016	Chain Take-up Bushing		TBBMY-1.3.10
11	2	92120.0600001.007	Chain Gear Box Z=20		TBBMY-1.3.11
12	2	93021.0000000.046	Hexagonal Bolt		CIVATA AKB M12x1,75x45x30 8.8
13	2	93071.0000000.053	Bearing		RULMAN 62202 2RS
14	2	93262.0000000.009	Hole Ring	DIN472	SEGMAN DELİK Ø35x1,5 CK75
15	4	93082.0000000.003	Fibered Nut		SOMUN FIBERLİ M12x1,75
16	2	93081.0000000.001	Fibered Nut		SOMUN AKB M10x1,5
17	5	93021.0000000.043	Hexagonal Bolt		CIVATA AKB M12x1,75x35 8.8
18	2	93120.0000000.017	Cotter Pin		KOPİLYA Ø4x25
19	2	93021.0000000.102	Hexagonal Bolt		CIVATA AKB M16x2x60x40 8.8
20	8	93062.0000000.007	Plain Washer		RONDELÂ DÜZ M16
21	2	93071.0000000.049	Bearing		RULMAN 6302 2RS/16 NSK
22	2	93082.0000000.007	Fibered Nut		SOMUN FIBERLİ M16x2
23	1	93082.0000000.015	Fibered Nut		SOMUN FIBERLİ M8x1,25
24	1	93071.0000000.007	Bearing		RULMAN 6201 C3 2RS
25	1	93062.0000000.015	Plain Washer		RONDELÂ DÜZ 5/16" KALIN
26	1	93021.0000000.161	Hexagonal Bolt		CIVATA AKB M8x1,25x40 8.8
27	9	93082.0000000.015	Fibered Nut		SOMUN FIBERLİ M8x1,25



CONVEYOR SYSTEM

Pos No.	Amount	Order Number	Explanation	Norm	Old Number
28	9	93063.0000000.004	Crinkled Spring Washer		RONDELÂ TIRTİL M8
29	9	...	Round Head Bolt		CİVATA BBTA M8x1,25x25
30	1	93062.0000000.013	Plain Washer		RONDELÂ DÜZ M8
31	9	93062.0000000.015	Plain Washer		RONDELÂ DÜZ 5/16" KALIN
32	6	93021.0000000.139	Hexagonal Bolt		CİVATA AKB M6x1x16 8.8
33	6	10600001.010.070062000	Band Washer		TBBMY-1.3.43
34	8	93062.0000000.012	Plain Washer		RONDELÂ DÜZ M6
35	8	93082.0000000.014	Fibered Nut		SOMUN FİBERLİ M6x1
36	1	92160.0600001.017	Band Chain Gear Box Bushing		TBBMY-1.3.36
37	6	93082.0000000.015	Fibered Nut		SOMUN FİBERLİ M8x1,25
38	1	10600001.082.000000000	Band Rope Spring		TBBMY-1.3.38
39	1	93082.0000000.015	Fibered Nut		SOMUN FİBERLİ M8x1,25
40	2	93062.0000000.015	Plain Washer		RONDELÂ DÜZ 5/16" KALIN
41	1	93021.0000000.158	Hexagonal Bolt		CİVATA AKB M8x1,25x25 8.8
42	2	93027.0000000.002	Setuskur Bolt		CİVATA SETSKUR M8x1,25x16 8.8
43	2	93231.0000000.011	Roller Bearing Chain		ZİNCİR MAKARALI C2050-1 DEMET TAŞIYICI
44	2	93076.0000000.003 93076.0000000.004	Bearing Plate Bushing		RULMAN SAC SA204 FKA RULMAN SAC YATAK PF204
45	1	92120.0600001.004	Chain Gear Box Z=20		TBBMY-1.3.1.30
46	1	92160.0600001.012 92160.0600001.068	Band Shaft-400mm Band Shaft Short-330mm		TBBMY-1.3.1.28 TBBMA-1.3.1.28
47	2	93150.0000000.025	Kama		KAMA 6x6x30 A DIN 6885
48	1	92120.0600001.003	Chain Gear Box Z=26		TBBMY-1.3.1.26
49	1	92120.0600001.002	Chain Gear Box Z=20		TBBMY-1.3.1.25
50	2	93062.0000000.005	Plain Washer		RONDELÂ DÜZ M12
51	6	93062.0000000.017	Plain Washer		RONDELÂ DÜZ 1/2" KALIN
52	3	93081.0000000.003	Fibered Nut		SOM-DÜZ-M12x1,75
53	2	93262.0000000.007	Hole Ring	DIN472	SEGMAN DELİK Ø32x1 CK75



BAND TRANSMISSION BOX

**BAND TRANSMISSION BOX**

Pos No.	Amount	Order Number	Explanation	Norm	Old Number
01	1	92160.0600001.009	Transmission Box Body Shaft		TBBMY-1.2.6.1
02	1	92160.0600001.010	Transmission Box Pto Shaft		TBBMY-1.2.6.2
03	1	92020.0600001.001	Pulley		TBBMY-1.2.6.3
04	1	92120.0600001.001	Chain Gear Box Z:13		TBBMY-1.2.6.4
05	2	10600001.010.060012000	Special Washer		TBBMY-1.2.6.5
06	2	93021.0000000.157	Hexagonal Bolt		CİVATA AKB M8x1,25x20 8.8
07	2	93041.0000000.005	Oil Felt		KEÇE YAĞ 25x47x7
08	1	93041.0000000.004	Oil Felt		KEÇE YAĞ K21 25/4 (BOĞAZ KEÇESİ)
09	3	93071.0000000.011	Bearing		RULMAN 6205 C3 2RS
10	1	93021.0000000.153	Hexagonal Bolt		CİVATA AKB M8x1,25x12 8.8
11	1	93071.0000000.044	Bearing		RULMAN 6305 C3 2RS
12	3	93210.0000000.016	Raynel		SİM 25x36x0,80
13	1	92120.0801102.001	Ring Gear Z:23		TCDGSY082-1.3.14
14	6	93081.0000000.016	Non-Fibered Nut		SOMUN AKB M8x1,25
15	1	92120.0801102.002	Bevel Gear Z:17		TCDGSY082-1.3.04
16	1	92160.0801102.018	Oil Tap		TCDGSY082-1.3.18
17	2	92130.0801103.004	Transmission Box Empty Box Half		TCDGSY082-1.3.15 AÇIK
18	1	93050.0000000.002	O-Ring		O-RING 17,15x2,62
19	4	93261.0000000.006	Shaft Ring	DIN471	SEGMAN MİL Ø25x2 CK75
20	1	93150.0000000.008	Strap	DIN6885	KAMA 8x7x25 A
21	7	93023.0000000.021	Hexagonal Bolt		CİVATA İMB M8x1,25x35 8.8
22	1	93150.0000000.011	Strap	DIN6885	KAMA 8x7x35 A
23	2	93150.0000000.007	Strap	DIN6885	KAMA 8x7x17 A